

PORTABLE SLIT LAMP LS-1



One-hand Operation

One-touch magnification switch is easy for doctors' inspection.



Big slit angle

Illumination angle max. up to be 60 degree, can get better slit view for cornea etc..




AA batteries are supported for long-term continuous operating time

Both AA rechargeable and dry cell batteries are supported, and convenient to purchase everywhere. Batteries will provide more than 4 hours operating time after full charged.



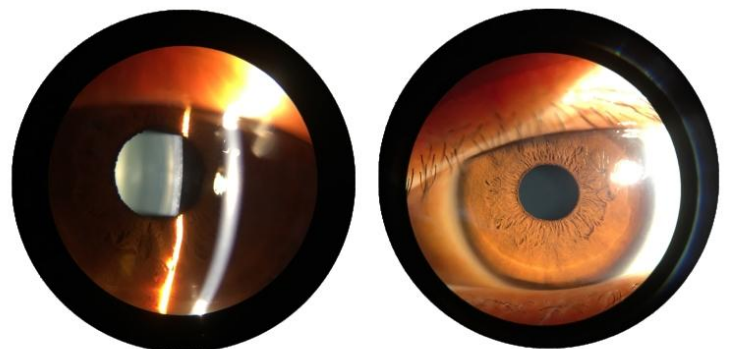
Warm LED illumination and Max. 250 000lux high intensity

Warm LED illumination with 3500k color temperature and long-time working time, creates a perfect observation circumstance and helps doctors relieve the visual fatigue at the same time.

 Iphone adapter for LS-1 to capture images (OPTION)



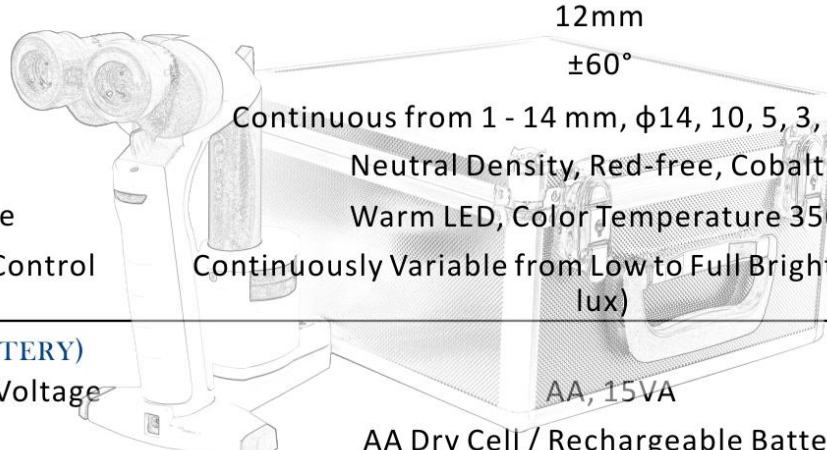
 High definition optical performance



MICROSCOPE	LS-1A	LS-1B
Type	Binocular Portable Slit Lamp	
Angle of Convergence	13°	
Magnification	10X	10X 16X
Working Distance	80mm (16X) 100mm(10X)	
Pupil Adjustment Range	49 - 75 mm	
Diopter Adjustment	±7D	

ILLUMINATION

Slit Width	0.15mm, 0.5mm, 0.8mm, 1.6mm, φ12mm & 1mm Square
Slit Length	12mm
Slit Angle	±60°
Slit Aperture	Continuous from 1 - 14 mm, φ14, 10, 5, 3, 1, 0.2 mm
Filter	Neutral Density, Red-free, Cobalt Blue
Light Resource	Warm LED, Color Temperature 3500k
Illumination Control	Continuously Variable from Low to Full Brightness(≥250 000 lux)



POWER (BATTERY)

LED Working Voltage	AA, 15VA
Battery Type	AA Dry Cell / Rechargeable Batteries
Continuous Operating Time	≥ 4 hours

DIMENSIONS AND WEIGHT

Dimensions	320*310*205 mm
Net Weight	Approx. 835g

STANDARD ACCESSORIES

Carrying Case, Battery Charger, Forehead Support, Instrument Manual



ChongQing Sunkingdom Medical Instrument Co.tLtd

35-2, YingTian GuangDian GongGu, CaiJiaGang Industry Zone, Beibei District, ChongQing, China
 TEL: +86 023 68643990
 FAX: +86 023 68102793
 URL: www.cqsunkingdom.com
 E-mail: sales@cqsunkingdom.com

