



surgiForce

SURGEON'S CHAIR



E

ENJOY QUALITY AND DESIGN

surgiForce



Item No.: 2600 0004 with Comfort seat
Item No.: 2600 0008 with Formed seat (Illustration)

That is high tech and high precision.

The ultimate surgeon's chair for microsurgery.

Sophisticated engineering, design and function down to the smallest detail. Amazing range of armrest adjusting functions: Turn it, tilt it, rotate it, extend it – to support each of the surgeon's arm movements with the greatest of ease! Ultra-precise navigation within the operating field, sterile operation, and a comfortable, non-fatiguing work environment – for a work flow worthy being rated "Premium de luxe".



MED.TEC at its highest level

Double castors

The five high-grade double castors are smooth-running and rotated by 360 degrees. This means no-limits mobility, especially in confined operating room spaces. *surgiForce*'s central front castor in particular gives extra stability to keep the treating surgeons safely in place whenever they shift their bodyweight forward.



Chassis

The drive mechanism's base is made of cast aluminum. This means maximum stability and longevity and no-limits mobility. The material and workmanship meet the strictest sanitary requirements.



Plastic cover panels

The high-shine plastic cover panels with their scratch-resistant and impact-modified surface finish are extremely hygienic and easy to disinfect. Abrasion-resistant corner guards (orange) made of synthetic rubber take the stress out of maneuvering *surgiForce* even at close quarters to other medical equipment.



Mains-free operation

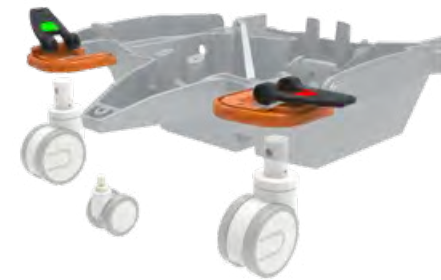
Accumulators

The charger-battery-control unit integrated in the drive mechanism permits mains-free operation at protective low voltage. Splash-protected charging socket on the bottom of the drive mechanism.



Braking system

The easy-to-reach and easy-to-use central brake acts on all four double castors to keep the *surgiForce* safely and reliably in the desired position.



Multi-function unit

Foot operated

To activate the multi-function unit, tap it with your foot. It allows the effortless powered height adjustments of the seats and armrests, independently of each other.

Intuitive foot keypad operation of the multi-function unit for powered seat height and armrest adjustment. Activation is signaled by acoustic and visual signals.



Sterile operation

Black pedal:
seat height adjustment



Gray pedal:
arm height adjustment



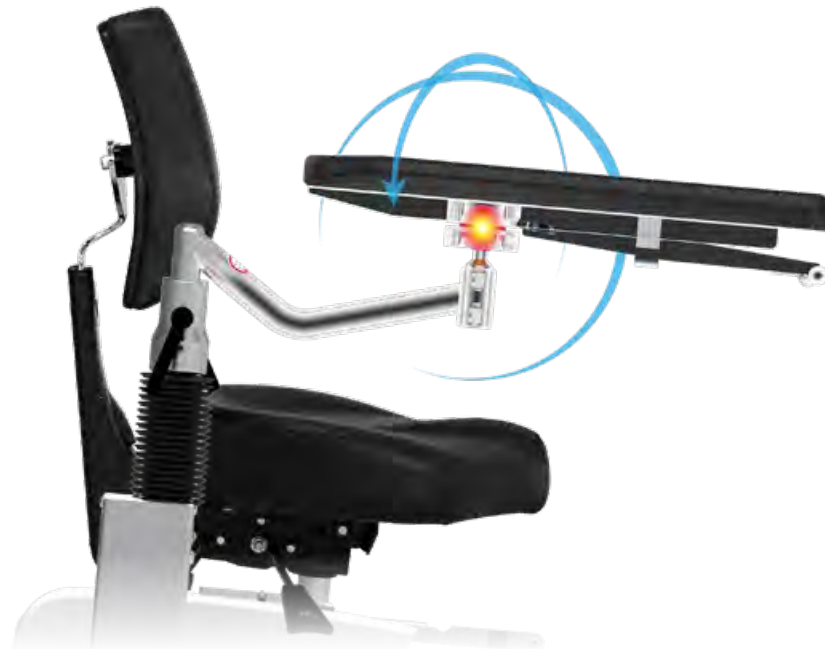
Armrests with "de luxe" feature

3D freedom of movement

High-precision, maintenance-free ball joint for full 360-degree range armrest movements around all axes. Ultra-lightweight guide system for fast, efficient and vibration-proof adjustment of individual underarm positions.

Need to readjust *surgiForce* while maintaining sterile conditions? Not a problem! In addition to the foot keypad, *surgiForce* features so-called "one-hand triggers" underneath the armrests. Lift them briefly to adjust the height!

Angled armrest support for increased freedom of armrest movement around the lateral axis.



Seating systems



Comfort

The seating system Comfort: With mechanical individual adjustment functions. For a correct, back-friendly sitting and working posture, the seat surface or the seat depth can be adjusted by a sliding mechanism located underneath the seat.

Seat angle adjustment

Back angle adjustment

Back height adjustment



Formed seat

The form seating system: With enlarged contact surface for more comfort and optimum weight distribution. The seat surface can be individually tilted forward and fixed together with the backrest. In addition, angle and height adjustment of the backrest ensure an ideal sitting posture.



Seat angle adjustment

Back angle adjustment

Back height adjustment



PREMIUM LINE

Linear guides

To give you that extra margin of flexibility: Armrests with linear guides! Applying pressure with your forearm will make the arms "glide" effortlessly in longitudinal direction while letting go will stop them by self-locking mechanism - available as an option.



Armrests

Made of molded PUR foam - pleasant to the touch, no slick leatherette cover - for guaranteed secure hold. Suitable for disinfectants.



Upholstery / colour card

Standard colour
black
Item No.: 3037 0235



"Periline" Page 111

Comfort

Standard colour
anthracite
Item No.: 3037 0052



"Tundra skai" Page 108
"Pandoria Plus" Page 109

Formed seat

Technical specifications

Lifting column

- Lifting height of the seat 200 mm
- Lifting height of the armrests 130 mm
- Electromotive adjustment via the foot control elements

Dimensions

- Max. LxWxH (incl. armrests) 860x750x1,270 mm

Chassis

- Castors \varnothing 100 mm
- 5th castor \varnothing 65 mm
- Central brake acting on all four castors
- Emergency stop button

Battery unit

- Lead-gel battery, 2 pcs. 12 V, 2,9 A
- Universal battery charger: Input: 100 – 240 V
Output: 24 V

Sitzsysteme: Comfort (Formed seat)

- Min. sitting height 600 mm (580 mm)
- Max. sitting height 800 mm (780 mm)
- Seat position adjustment (forward/back) 120 mm
- Seat angle adjustment -6° (-14°)
- Back angle adjustment -10° (-19° / $+5^{\circ}$)
- Seat adjustment mechanism 113 mm (113 mm)

Weight

74 kg

Max. load

150 kg

Techn. Änderungen vorbehalten.

Technical dimensions

Seating system Comfort



Seating system Formed seat



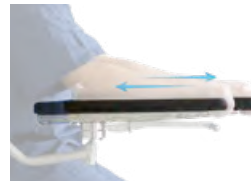
Components



surgiForce
Formed seat Item No.: 2600 0008



surgiForce
Comfort seat Item No.: 2600 0004



Armrest pair with linear guide and one-hand release, factory-fitted

Item No.: 3351 1008



Armrest pair with one-hand release for neurosurgery (angular), retrofit kit

Item No.: 3351 1010



Footswitch plate 429x820 mm, height 53 mm

Item No.: 3317 0000



Footswitch plate 429x670 mm, height 53 mm

Item No.: 3351 1041

PREMIUM LINE

"Tundra skai"



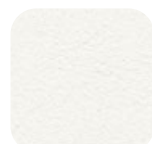
High quality skai® material with fine calf leather grain and subdued matte-gloss-effect. The very extensive and trend-orientated colour spectrum enables many applications and combinations.

Product Specification

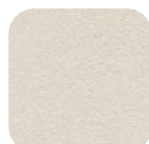
- Long-lasting
- Tear resistant
- Easy to clean
- Abrasion resistant (DIN EN ISO 6570-2)
- Lightfast
- Disinfectant resistant
- Fulfills medical standard (DIN EN ISO 10993-5+10)
- Blood- and urine resistant
- Phthalate-free
- Vegan

<i>eyeForce</i>		1800 0000
<i>500 XLE</i>		1500 0006
<i>500 XLE comfort</i>		1500 0006
		+ 3037 0080
<i>500 bariatric</i>		1500 0002
<i>500 XLS</i>		1500 0005
<i>500 ECO</i>		1500 0008
<i>400 XL</i>		1400 0001
<i>surgiForce</i>	Formed seat	2600 0008
<i>surgiForce light</i>	Formed seat	2600 0009
<i>surgiLine</i>	Formed seat	2200 0008
<i>assistLine</i>		2400 0015
<i>motionLine</i>		1700 0000
<i>motionLine-E</i>		1700 0001

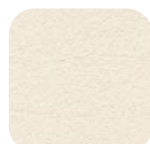
+ Item No.: 3037 0...



F6461198
Item No.:134



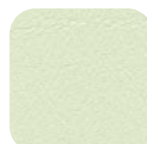
F6461210
Item No.:057



F6461636
Item No.:094



F6461230
Item No.:058



F6461610
Item No.:153



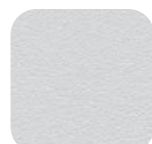
F6461495
Item No.:067



F6461456
Item No.:001



F6461338
Item No.:008



F6461288
Item No.:007



F6461550
Item No.:070



F6461608
Item No.:075



F6461496
Item No.:068



F6461609
Item No.:076



F6461581
Item No.:073



F6461196
Item No.:051



F6461453
Item No.:062



F6461356
Item No.:059



F6461381
Item No.:119



F6461354
Item No.:011



F6461350
Item No.:010



F6461199
Item No.:054



F6461454
Item No.:063



F6461557
Item No.:072



F6461556
Item No.:071



F6461458
Item No.:066



F6461457
Item No.:065



F6461607
Item No.:074



F6461542
Item No.:069



F6461343
Item No.:009



F6461543
Item No.:109



F6461455
Item No.:064



F6461273
Item No.:006



F6461205
Item No.:056



F6461204
Item No.:055



F6461357
Item No.:060



F6461195
Item No.:050



F6461197
Item No.:052

The colours displayed on your device may differ slightly from the original colours. If you wish to receive original colour charts, please contact us at info@ufsk-osys.com.

“Pandoria Plus”



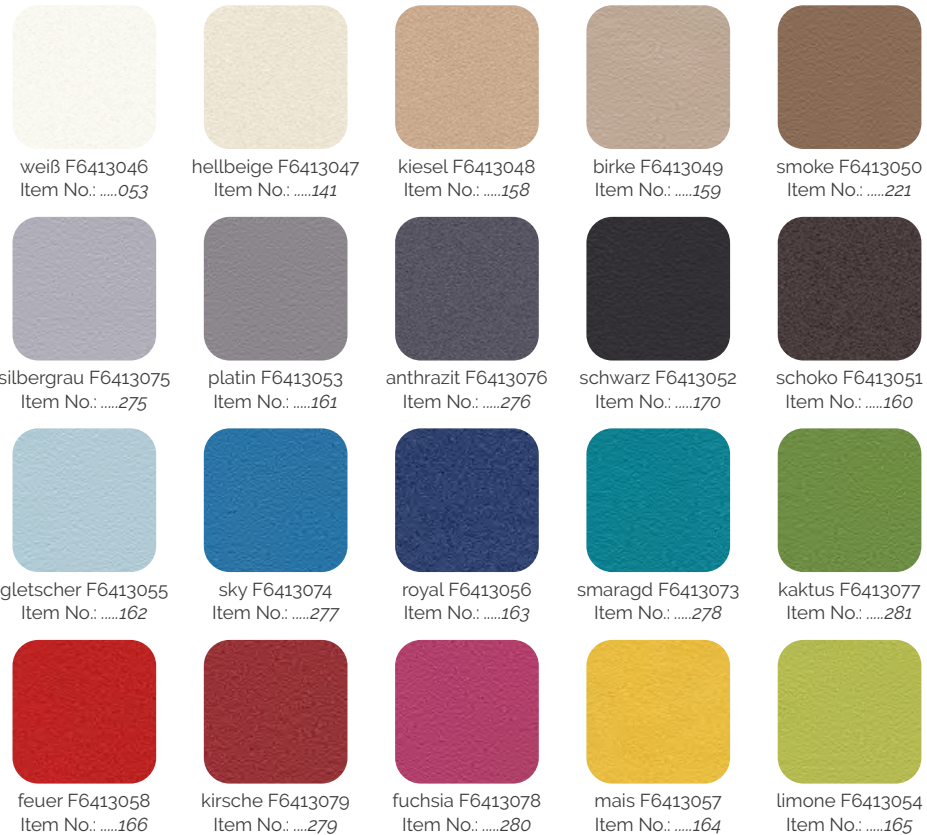
skai® Pandoria Plus is a high-quality upholstery material, whose fine micropore structure gives a certain unobtrusiveness, which is refined by an attractive tone-in-tone effect. The very pleasant feel of the material and the excellent material characteristic and the broad, modern color spectrum make skai® Pandoria Plus universally usable.

Product Specification

- Long-lasting
- Tear resistant
- Easy to clean
- Abrasion resistant (DIN EN ISO 5470-2)
- Resistant to oil and fat
- Lightfast
- Disinfectant resistant
- Flame protection
- Fulfills medical standard
- Resistant to sudor, blood and urine
- 0161-21 (IMO FTPC Part 8)
- Antibacterial according to JIS Z 2801
- Vegan

<i>eyeForce</i>		1800 0000
<i>500 XLE</i>		1500 0006
<i>500 XLE comfort</i>		1500 0006
		+ 3037 0080
<i>500 bariatric</i>		1500 0002
<i>500 XLS</i>		1500 0005
<i>500 ECO</i>		1500 0008
<i>400 XL</i>		1400 0001
<i>surgiForce</i>	Formed seat	2600 0008
<i>surgiForce light</i>	Formed seat	2600 0009
<i>surgiLine</i>	Formed seat	2200 0008
<i>assistLine</i>		2400 0015
<i>motionLine</i>		1700 0000
<i>motionLine-E</i>		1700 0001

+ Item No.: 3037 0136
 + Item No.: 3037 0...



The colours displayed on your device may differ slightly from the original colours. If you wish to receive original colour charts, please contact us at info@ufsk-osys.com.

“Periline”



Product Specification

- Without Phthalates
- Biocompatibility: Cytotoxicity (EN ISO 10 993-5) and test for irritation and delayed-type hypersensitivity (EN ISO 10 993-10)
- Urine resistance
- Blood resistance
- Resistance to perspiration
- Resistance to spitting
- Light fastness
- Color fastness to rubbing
- Flame retardant

<i>surgiForce</i>	Comfort seat	2600 0004
<i>surgiForce light</i>	Comfort seat	2600 0006
<i>surgiTrend</i>	Comfort seat	2200 0012
<i>surgiLine</i>	Comfort seat	2200 0013
<i>assistPro F</i>		2400 0005
<i>assistPro H</i>		2400 0009
<i>easyPro F</i>		2400 0010
<i>easyPro H</i>		2400 0006
<i>easyPro R</i>		2400 0013
<i>easyLine F</i>		2400 0020
<i>easyLine H</i>		2400 0021
<i>easyLine R</i>		2400 0022
<i>easyLine Hs</i>		2400 0023
<i>easyLine Rs</i>		2400 0024

+ Item No.: 3037 0...

				
kastanie 015817 Item No.:240	light brown 016037 Item No.:239	creme 015812 Item No.:225	weiß 010881 Item No.:224	stein 015813 Item No.:236
				
saphir 015814 Item No.:231	delft 010766 Item No.:241	antistatisch schwarz Item No.:223	schwarz 011499 Item No.:235	anthracit 016046 Item No.:234
				
azur 015815 Item No.:230	aubergine 016041 Item No.:229	lavendel 016042 Item No.:228	rot 010878 Item No.:238	orange 016040 Item No.:237
				
kiwi 015816 Item No.:233	lime green 016043 Item No.:232	lemon 016039 Item No.:226	safran 010879 Item No.:227	

The colours displayed on your device may differ slightly from the original colours. If you wish to receive original colour charts, please contact us at info@ufsk-osys.com.

Upgrade your OR to perfection.



eyeForce



500 XLE



500 XLE comfort



500 bariatric



500 XLS



500 ECO



400 XL



motionLine



motionLine-E



surgiForce



surgiForce light



surgiTrend



surgiLine



stayClean wipes



stayClean



staySoft



stayClean roll



supportLine



supportLine plus



assistTrend



assistPro F



assistPro H



easyPro F



easyPro H



easyPro R



easyLine F



easyLine H



easyLine R



easyLine Hs



easyLine Rs



assistLine

CONTACT US



UFSK
INTERNATIONAL

OSYS

UFSK-International OSYS GmbH
Kirchhoffstraße 1
93055 Regensburg
Germany

Phone +49 (0) 941 78862 15
Fax +49 (0) 941 78862 35
Mail info@ufsk-osys.com
Web ufsk-osys.com

MADE IN GERMANY
Design | Construction | Manufacturing