

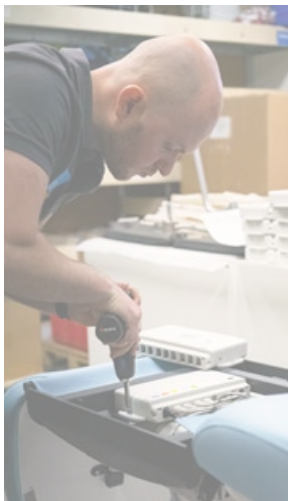
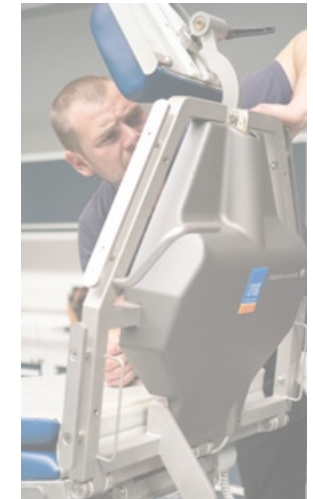
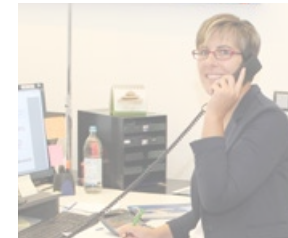
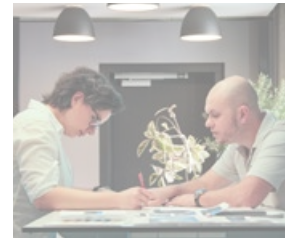
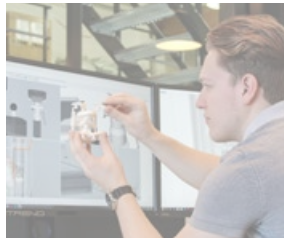
PRODUCT GUIDE **2023**



SURGICAL CHAIRS & TABLES FOR EYE- & MICROSURGERY

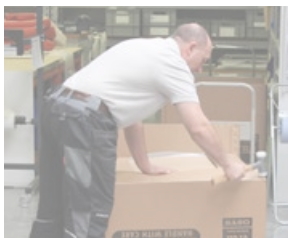
ENJOY QUALITY AND DESIGN

About us



"We build operating tables and surgical chairs for physicians and patients with a keen understanding of quality and outstanding comfort!"

Christian Scherrieble



"We develop products for the most brilliant machine there is – the human body."

Jürgen Scherrieble



We started out with a vision - "Designed from the practice - for the practice"

UFSK-OSYS has been developing highly specialized mobile treatment and surgeon's chairs for ophthalmology for almost 30 years - in close cooperation with renowned ophthalmic surgeons. We believe in never losing sight of what really matters, while keeping a keen eye on the latest advances in medicine. Our core competency: the precise and safe positioning of both patient and surgeon for eye surgeries and microsurgical procedures in the head area. To address this challenge, we build tailor-made work platforms offering the latest in technical and functional sophistication while making your OR management super efficient.

The "Mobile Table Rotation" is our signature workflow concept designed to handle rapid surgery cycles with high patient turnover. This concept has been one of our international bestsellers for years, especially in the field of ophthalmology! Thanks to state-of-the-art materials and sophisticated technical details, our equipment is durable and easy to maneuver at the same time while helping to make your "surgical rotation schedules" efficient and back-friendly.

UFSK-OSYS treatment and surgeon's chairs - "Made in Germany" - are used all over the world and are supported by a network of qualified **UFSK-OSYS** service partners around the globe.

We have good reason to be proud of this market presence, which is the fruit of our long-standing quality policy and customer-focused corporate philosophy. Whether in development, design and product approval or production, sales, logistics and after-sales - we believe in adding our own design contributions to all areas, and we believe in optimizing, communication and confidence building.

We believe that this is the way to create the best and most exciting products - the result of good cooperation and mutual inspiration!

Come and discover our latest ideas!



Content

About us	2
Facts	6
Corporate philosophy	8
UFSK-OSYS quality	10
Legal notice	107

Surgeon's chairs

<i>premiumLine</i>	68
<i>surgiForce</i>	70
<i>surgiForce light</i>	74



Treatment chairs

<i>premiumLine</i>	12	<i>performanceLine</i>	24
<i>eyeForce</i>	14	<i>500 XLE</i>	26
<i>eyeForce + e-drive</i>	18	<i>500 XLE comfort</i>	30



Assistant's chairs

<i>performanceLine</i>	80		88
<i>surgiTrend</i>	82	<i>assistTrend</i>	90
<i>surgiLine</i>	84	<i>assistPro</i>	91
		<i>easyPro</i>	92
		<i>easyLine</i>	93
		<i>assistLine</i>	94



Treatment chairs

functionalClass 36

500 *XLS* 38
500 *ECO* 44



Treatment table

400 *XL*



Transport and relaxing chairs

50
motionLine 54
motionLine-E 56



Instrument tables

supportLine 60
supportLine plus 61



Disposables

Cover drapes - *stayClean*
Paper roll - *stayClean roll*



62

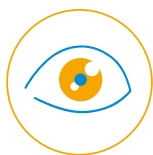
64
67

Classifications/color cards

Classifications 98
Color cards 100



Facts



Ophthalmic surgery

Core competence

Ophthalmology

For almost 30 years, **UFSK-OSYS** has been developing its products in close cooperation with internationally renowned ophthalmic surgeons, true to the motto:

"Designed from the practice - for the practice"

exclusive mobile eye surgery and surgeon's chairs. Considering the very high patient turnover in this medical field and the global use of our products, we want to offer our customers a service friendly technology designed to state-of-the-art quality standards.

Every minute counts



Less and less time for more and more patients?
Tight calculations and falling return on investment?
Clinic-friendly rotation systems are a big help for cutting down on average surgery times because every minute counts.

3 *UFSK-OSYS operation chairs per OR on average.*

30 *cataract surgeries per day.*

Optimized workflow

While you are operating on a patient, another patient can be prepared while yet another patient can recuperate. Your patient never needs to leave his or her seat. With the simple push of a button, You can conveniently adjust the treatment chair into operating table position - comfort right from the start.

Well over

15.000 *UFSK-OSYS operating systems worldwide.*

4.000 *UFSK-OSYS equipped operating rooms.*

Further medical specialties



I.V.I. treatment



Neurosurgery
Microsurgery



Implantology
Oral surgery
Maxillofacial surgery



Aesthetic surgery
Plastic surgery
Hair transplantation



Dermatology



ENT surgery

Well over **7.000.000** *operating cycles on UFSK-OSYS operating systems per year.*

Surgery according to the principle of rotation

Thanks to the mobility of **UFSK-OSYS** treatment chairs, patients can be pushed directly from the preparation room into the operating room - without having to get up. After surgery, patients can be taken to the recovery room on the same chair. This quickly frees up your operating theater for the next patient. What better guarantee for a high patient turnover - while saving you time and money!

1 Simple and Secure Access

The low access and sitting height support even physically handicapped patients while getting into the chair.



2 Innovative Patient Transport

The "intelligent" chassis ensures effortless patient transport even through narrow passages and on longer routes.



3 Preoperative Preparation

Headrest, backrest, seat surface and footrest are infinitely adjustable via electric motors - at the touch of a button - allowing you to immediately create the perfect surgery conditions for surgeon and patient alike - without losing unnecessary time.



**PREPARE, OPERATE,
RECOVER ON
ONE CHAIR**

MOBILE TABLE ROTATION

6 Comfortable and Convenient Exit

The chair automatically adjusts to the exit position allowing patients to depart easily and safely.



5 Enhanced Postoperative Relaxation

From the operating room directly to the wake up phase, allow your patients to start recuperating right away in an anatomically correct relaxation position which is initiated at the touch of a button - without need of first shifting or relocating the patient.



4 The perfect Surgical Position

Utilizing the chair's memory function, a surgeon can retrieve his or her ideal patient position at the push of a button. Total ergonomic design ensures outstanding comfort - before, during and after a procedure.



Corporate philosophy



Innovations

Intelligent solutions for your workplace

In constant search for perfection, we specify innovative details in our designs and functionality of our products. For even more

- Mobility
- Ease of use
- Comfort in seating and reclining
- Corporate healthcare



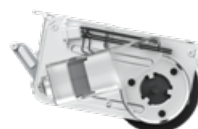
Know-how and precision Intelligent design that promotes mobility

Our highlights



Battery technology

usage, independent from electricity supply - powerful and eco friendly



e-drive

The electronic pushing aid, easy patient transfer - without much effort!



Memory-position and Auto-Run-function

for frequently used treatment positions - time saving and useful



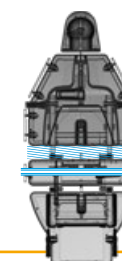
Sterile Controlling

made easy - with pop-up operation, joystick or foot pedal rocker switch



Steering-Guide function

easy steering - without great effort!



"SES" Surface-Extensions-System

For sliding the patient safely and comfortably into new positions

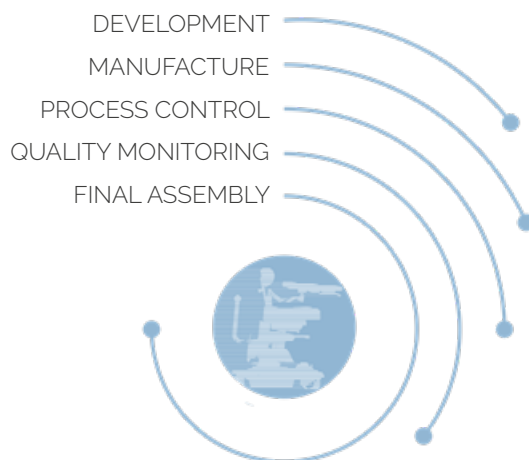
UFSK-OSYS Practical Intelligence

Design and production

Developing and manufacturing treatment and surgeon's chairs of sophisticated and sustainable product quality has been our top priority for years. We believe in your ideas and suggestions as an excellent opportunity for continuously improving our products - to give you the best possible equipment to work with.

We design and build our products in small series for maximum quality monitoring and process control. Every single piece of equipment undergoes 100% check-out!

UFSK-OSYS manufactures more than "tables and chairs". World-class medical and technical equipment. In **premiumLine**, **performanceLine** and **functionalClass** Quality.



Preventive technology

Reduced illness rate and improved productivity

We developed both our treatment chairs and tables and our surgeon's chairs and assistant chairs based on empirical studies - especially for eye and micro surgery. When designing and engineering our products, we paid special attention to the physical strains caused by poor posture in daily work life. Our products make it so easy to prevent back and neck problems, intervertebral disc problems, or fatigue symptoms.

- High-precision armrest systems with featherweight guidance for personalized positioning
- **e-drive** system
- Steering Guide
- Adequate seat inclination
- Lumbar support
- Lightweight chassis



Patient-oriented perfection in every detail

Investment

Investing with foresight into the future

In 2020, we expanded our production facilities and capacities at the Regensburg site for the third time, thus creating the spatial and personnel resources for the sustained positive further development of our company. For even more efficiency and performance!



UFSK-OSYS quality



Quality monitoring

We define "quality" not only by the end product but in all processes, and we are dedicated to continuous improvement. We believe in supreme quality - both in our products and in our services - and we dare you to put us to the test! Our certified QM system meets the requirements of ISO 13485:2016, i.e. it meets the particular performance and safety criteria imposed for the development, manufacture and sale of medical devices.

Beyond complying with the technical product standards (DIN/EN/IEC) and legal conformity requirements (CE, FDA, etc.), we are living these quality standards. Both "before" and "after" a customer's purchase, **UFSK-OSYS**'s staff makes sure of giving the best possible support: best-possible choice of products, regulatory support, shipping, and after-sales service.



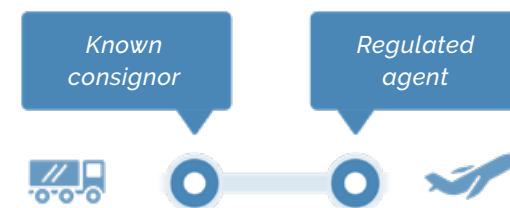
Modern logistics and International sales

Worldwide shipments - fast and reliable

Every year, we dispatch about 1,000 bulk deliveries and 2,000 packages - including urgently needed spare parts, medical accessories - as well as demo, replacement and rental equipment!

One of our guiding principles says that deliveries of goods and services in the medical sector cannot be delayed! Our contribution: well assorted and monitored spare parts management, fast response times plus air freight status as "known consignor". As part of the secure supply chain, our shipments are made in compliance with special security precautions and standards.

Urgent deliveries benefit from simplified and accelerated air freight handling processes - from dispatch to loading onto the aircraft - a time edge you will enjoy every time when ordering our medical equipment.




UFSK-OSYS Business Intelligence

Communication as added value

We believe in long-term, fair and successful cooperation with our customers as our number-one priority governing all of our actions.

In addition to our know-how and long-standing experience, we believe especially in identifying your needs and expectations, and to make them a reality - in an exciting and exuberating joint effort. The secret of our success: keeping in touch and keeping up the dialogue.

-  Headquarter Germany
UFSK-International OSYS GmbH
-  Our worldwide distributor network meets your demands every single day

UFSK-OSYS After-Sale

Service

We are connected to our customers 24/7 via our worldwide distributor network. Don't hesitate to use our customer hotline and online support. We offer regular live webinars, especially for our distributors.

Come and visit us at international trade conferences or at our Regensburg training center.



*"Big enough to be everywhere -
small enough to stay in touch"*



premiumLine

Our top model

As the fruit of our decades of experience in the field of ophthalmic and microsurgery, we have managed to design the absolute high-end, top quality model. Allow yourself to be swept away by the innovative materials, the visionary shapes, the elegant design and the sophisticated extra functions.

Set new standards in your operating room!

Come and discover the **eyeForce**, and be dazzled by its economy, effectiveness and quality. It is synonymous for top quality. Optionally equipped with our **e-drive** system, it is the only treatment chair in ophthalmic surgery business that comes with an automatic easy-push aid. It is the **e-drive** that moves, not the human!

Demand the best!



The "Preventive Technology" award reflects uncompromising lightweight construction, outstanding ergonomic operability, comfortable patient positioning and space-saving design. Back diseases of your operating theater staff are now a thing of the past.

This is our contribution to effective health and safety in the workplace.

**High end quality for
ophthalmic surgery**

eyeForce

Item No.: 1800 0000



eyeForce + e-drive

Item No.: 1800 0000 + 3316 0000

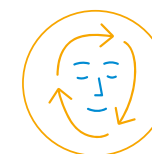


The professional world is excited and has honored us with an award!

Our **premiumLine eyeForce** treatment chair was awarded the **i-NOVO® Awards Tech Winner** Innovation Prize - in recognition of the rational design and extremely high-quality workmanship. We feel honored by this recognition and award.



Ophthalmic surgery



Dermatology



Aesthetic surgery
Plastic surgery
Hair transplantation



Implantology
Oral surgery
Maxillofacial surgery



eyeForce

Item No.: 1800 0000

Our most innovative and modern patient positioning system with auto-run functions - specialized for precision surgery in head area. With optional **e-drive** easy-push aid, Steering Guide and SES automated extension system - for even more ergonomics and economy at your workplace.

**Trendsetting comfort
and supreme quality**



MED.TEC at its highest level

Double castors

Four fully rotating double-run castors for back-friendly and easy rolling motion.



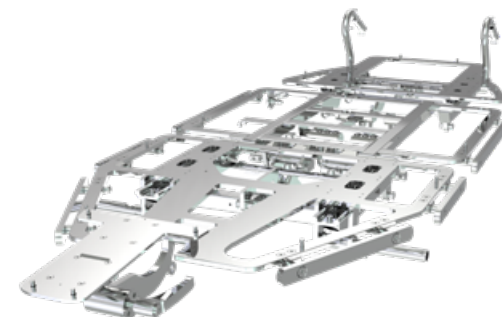
Chassis

Precision lightweight chassis made of cast aluminum.



Frame

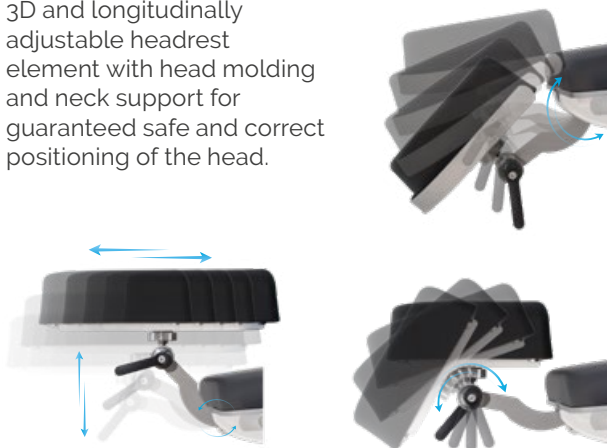
Lasercut procedure. Highly stable stainless steel frames. Including standard rails 25 x 10 mm for the attachment of a wide range of components.



Precise positioning of the head part

Headrest

3D and longitudinally adjustable headrest element with head molding and neck support for guaranteed safe and correct positioning of the head.

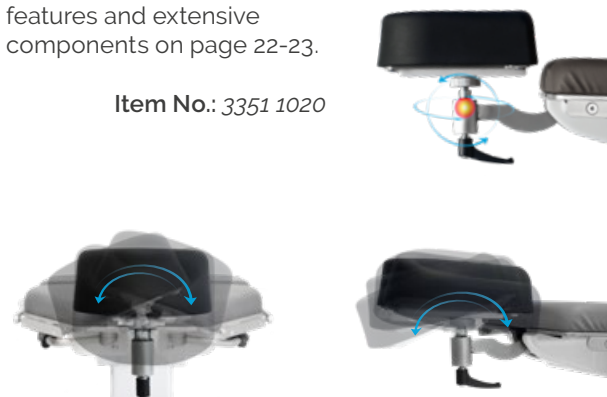


Components

Headrest with ball joint and more

Discover additional features and extensive components on page 22-23.

Item No.: 3351 1020



Sterile adjustment by surgeon/maximum legroom



Tiltable foot control

Tiltable foot keypad via two 4-way joysticks plus activation switch allow sensitive and precise chair adjustment even after the surgeon is already steril. Pushing the pedal lip (by foot) will activate the electronic control and battery mode of the equipment.



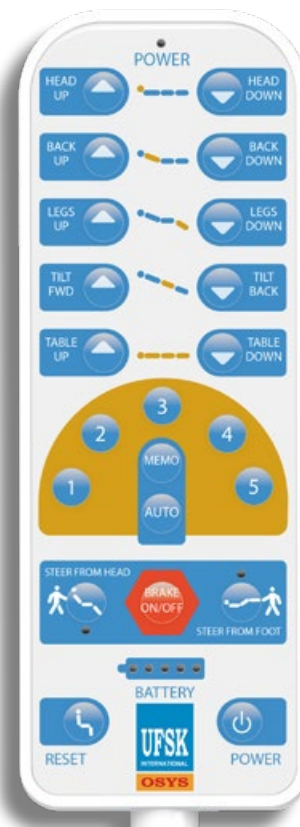
Positioning

The **eyeForce** treatment chair is adapted for patient positioning and ergonomic and comfortable patient treatment, in particular for outpatient surgical techniques, and offers versatile adjustment of the head, back, seat and leg sections and overall chair height for patient transport.

- Five freely configurable memory positions
- Reset button
- Auto run function
- Battery charge indicator

Positioning by hand control

Standard recommended memo keys



Hand control

Activate memory function/automatic movement

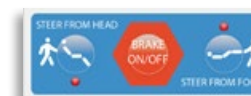
It is possible to save 5 MEMO positions: Set the desired position (hold down the MEMO key until the orange LED lights up). Then press the numeric key of a memory location for a MEMO position - the MEMO position is now saved.



Press and hold "AUTO" until the LED lights orange, then briefly tap on either 1, 2, 3, 4 or 5 to move to the desired position of the surgical bed.



All castors are braked (red)



“Steering Guide” maneuvering aid



Operation via push handles and hand control

The **eyeForce** treatment chair offers an electronically controlled braking system with “Steering Guide” function. In addition to “free movement” and “brake applied” the treatment chair offers directional guidance as an additional electronic wheel positioning function. This additional function facilitates the controlled maneuvering of the chair by just one person and can be activated from both sides of the chair via the chair handles or optionally via the hand control.

Directional guidance is activated (orange)



Directional guidance is deactivated (green)



Pushing from the head direction



Pushing from the foot direction



Surface-Extensions-System “SES” positioning aid

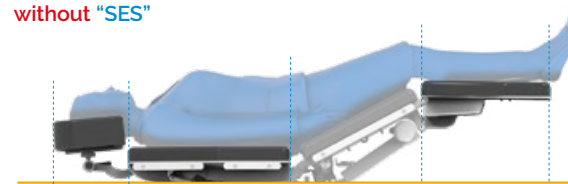


Automated solution for patient positioning

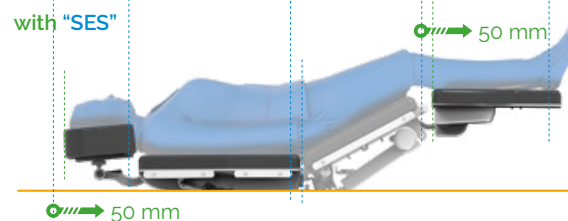
Both the backrest and the legrest segments automatically move 50 mm along with the patient when moving the chair into the reclined or entry position. The “SES” avoids patient repositioning, which would otherwise be necessary, by extending and flexing the individual segments. Returning the leg segment to the entry position reduces the entry height by an additional 50 mm.

Movement in reclining position

without “SES”

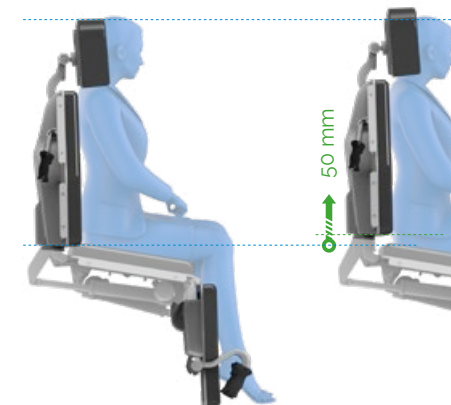


with “SES”

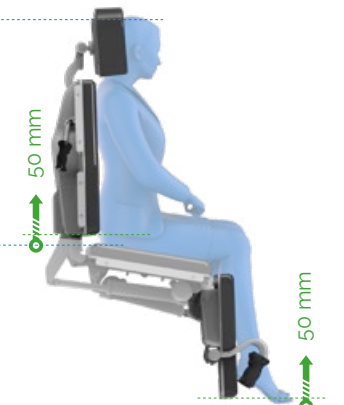


Movement in entry position

without “SES”



with “SES”



Retractable push handles

Manually adjustable push handles on the foot end with automatic return function, for easy patient transfer.





eyeForce + e-drive

Item No.: 1800 0000 + 3316 0000

Powerful yet gentle.

e-drive system for effortless and rapid movement of the chair over long distances. The new optional system consists of a 5th wheel with drive motor. It serves as a pushing aid for easy forward and backward movement – with an extra range of 2 kilometers per battery charge. The system's operation is identical to that of the "Steering Guide" system, via the respective push handles with potentiometer for infinite and precise speed adjustment. It is possible to integrate the system any time at a later date.



WE-DRIVE YOUR OR!

The electronic push-aid

Control over push handles

Push handle at the left head/foot end with a rocker switch for moving the treatment chair forward and back.



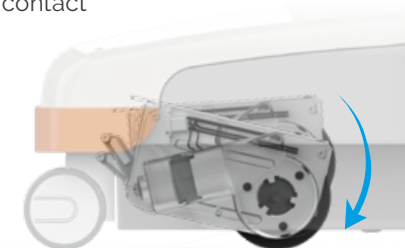
Push handle at the right head/foot end with a potentiometer for speed control.



Low-noise movement/trackless movement

By switching on the fifth electronically drive wheel in the chassis of the chair, the physical labor of the **person doing** the pushing is **noticeably reduced**.

- Shock-free transport
- Long-lived design
- Optimum floor contact
- Long range



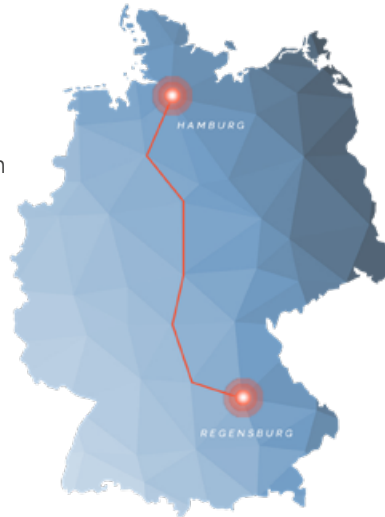
The ease of pushing - How much force is needed to move 300 kg? - Zero.

Who would have thought this is possible?

This is how far your staff pushes a load of 300 kilograms per year:

- approximately 70 meters per surgery round
- up to 10,000 surgeries per year each

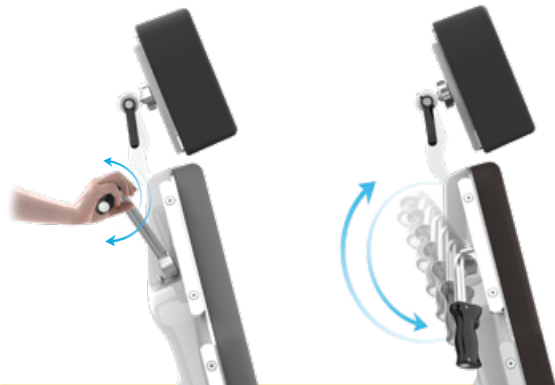
This results in up to **700 km per year!**



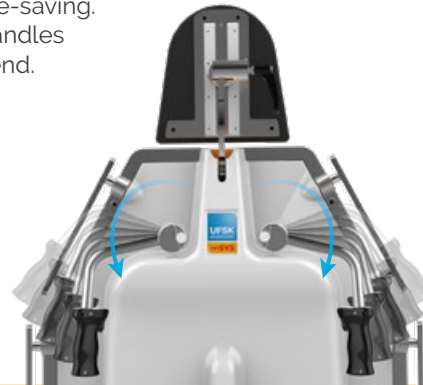
More than 1,000 **eyeForce** with **e-drive** are already in use in eye clinics all over the world: up to **700,000 kilometers per year!**



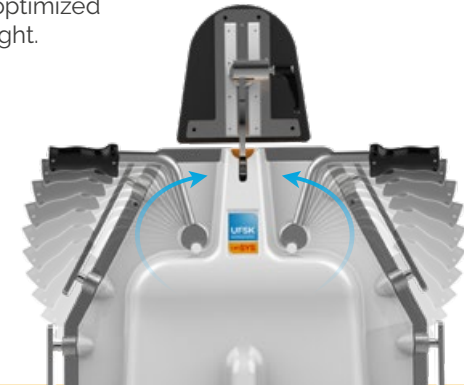
Push handles 2.0 - perfect interaction - top-of-the line mobility and ergonomics.



More legroom in the operating theater! Space-saving. Fold-down handles on the head end.



Solid, ergonomically shaped handles at optimized pushing height.



Technical specifications



Chassis

- Outside length 900 mm
- Outside width 662 mm
- Brake system acting on all four castors
- Directionally guided steering ("Steering Guide"), easily activated at the push of a button
- Castor diameter, electr. conductive \varnothing 150/100 mm
- Foot control element with joystick (total, head, back, Trendelenburg up/down)
- Emergency stop button
- Optional push-aid (**e-drive**)
- With equipotential bonding connection
- Abrasion-resistant corner guards (orange) made of synthetic rubber

Trendelenburg/Reverse Trendelenburg



Upper frame

- 4-part support frame (head, back, seat, leg part)
- Removable upholstery 40 mm
- Width of upholstery 650 mm
- Standard stainless steel side rails on both sides 25 x 10 mm
- Width incl. norm rails 700 mm
- Length 1,780 – 1,900 mm

	Angle	Dimensions (L x W)
• Head part	-31°/+22°	255 x 245 mm
• Back part	0°/+75°	540 x 650 mm
• Seat part	-6°/+26°	450 x 650 mm
• Leg part	0°/-78°	510 x 610 mm
• Height adjustment		640 – 900 mm
• Entry height		580 mm
• Legroom		470 – 730 mm
• Trendelenburg -26°/Reverse Trendelenburg +6°		

Back part/leg part



Electrical control

Manual keypad

- Memory controller with 10 buttons for head, back, seat, leg part – total up/down; 2 buttons for directionally guided steering, 1 button for electronic brake, 1 easy entry button, memory button, on-off button, auto-run function
- 5 freely programmable memory positions
- Visual battery level indicator

Foot control element

- Foot control element 2 joysticks plus activation switch
- Optional push-aid (**e-drive**)

Electric drives

- Head, back, seat, leg part, total up/down
- Trendelenburg/Reverse Trendelenburg

Height adjustment



Powerful accumulators

- Power supply-independent battery unit with 2 batteries (lead-gel), pollution free, maintenance-free, cadmium-free
 - Quick-exchange battery drawer replaceable without tools
 - Universal battery charger
- Input: 100 – 240 V
Output: 24 V

Operating time per battery charge

- Measured by operating circle (Prepare-Operate-Recover) 100 OPs
- Quantity of operating circles depends on individual operation

Max. load 250 kg

Weight 163 kg

Subject to technical modifications.

Mains-free operation

Easy recharging of the equipment thanks to charging adapter and integrated battery charger circuit board.



Simple battery replacement

An additional quick-exchange drawer (including batteries) allows you to quickly replace the rechargeable battery packs (back-up system **Item No.: 3339 0000**).



Equipment protection

Cover drape *stayClean*

2,000 x 730 mm, box á 160 Pieces
4 x 40 Pieces **Item No.: 3034 0014**

Page 64



Color card

Standard color

anthracite **Item No.: 3037 0052**

"Tundra skai"
Page 102

"Pandoria Plus"
Page 103





Components



eyeForce

Item No.: 1800 0000



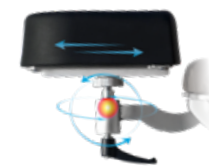
e-drive,
upcharge

Item No.: 3316 0000



Backup battery drawer
incl. batteries

Item No.: 3339 0000



Headrest with ball joint,
360° all-round adjustment,
factory-fitted

Item No.: 3351 1020



Side parts right and left,
580x200 mm,
incl. quick-release clamp for
mounting on norm rail

Item No.: 3351 0050



Side rails right and left,
swiveling incl. locking,
upholstered

Item No.: 3102 0000



Anesthesia arm board
with universal joint,
incl. mounting clamp

Item No.: 3011 0000



Mounting clamp polished
aluminium, with quick clamp
lever for norm rail 25x10 mm,
incl. locking device

Item No.: 3090 0000



Flexible surgical drape
support rod (mounting clamp
3090 0000 not included)

Item No.: 3032 0000



Flexible surgical drape
support rod, with air
connection (mounting clamp
3090 0000 not included)

Item No.: 3033 0000



Hand control holder,
PVC
(mounting clamp 3090 0000
not included)

Item No.: 3018 0009



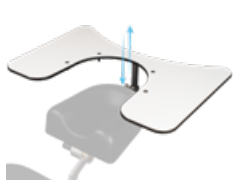
Hand control holder for
attachment onto an I.V. Pole
Ø 25 / 18 mm, PVC

Item No.: 3027 0006



Head part bumper
stainless steel

Item No.: 3028 0000



Wrist rest
550x370 mm,
height adjustable,
incl. mounting plate,
adjustment 115 mm

Item No.: 3209 0000



Wrist rest, adjustable,
incl. mounting plate
3013 0000,
adjustment 115 mm

Item No.: 3014 0000



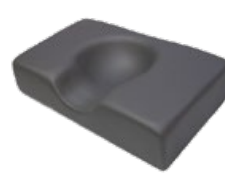
Wrist rest, adjustable, tiltable,
incl. mounting plate
3013 0000,
adjustment 115 mm

Item No.: 3014 0005



Mounting plate stainless steel,
for wrist rest 3014 0000,
3014 0005 and 3209 0000

Item No.: 3013 0000



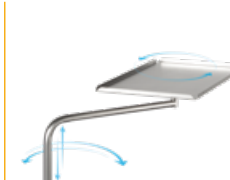
Head fixation pillow with
hollow (rubins pillow),
410x250 mm, height 100 mm,
factory-fitted

Item No.: 3022 0000



Shoulder parts,
right and left

Item No.: 3043 0000



Instrument table
500x300x15 mm,
height adjustable, swiveling,
detachable,
incl. component arm

Item No.: 3065 0003



Component arm
stainless steel, swiveling,
incl. extendible I.V. Pole
Ø 25 mm

Item No.: 3024 0000



Component arm
stainless steel, not swiveling,
incl. extendible I.V. Pole
Ø 25 mm

Item No.: 3334 0000



Wrist secure straps,
pair

Item No.: 3015 0000



Body strap with Velcro straps,
2-piece

Item No.: 3083 0000



Foot protection foil

Item No.: 3328 0000



Foot part extension,
attachable, incl. norm rail

Item No.: 3351 0002



Step

Item No.: 3351 0042



Knee half roll,
600x280x140 mm,
PUD-coated

Item No.: 3019 0000



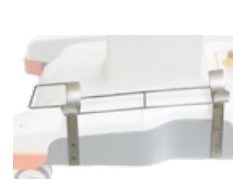
Knee roll round,
500x150 mm,
PUD-coated

Item No.: 3050 0000



Upholstery incl. integrated
knee roll,
factory-fitted

Item No.: 3037 0266



Cylinder holder

Item No.: 3072 0001



Instrument table
supportLine
height adjustable
730 – 985 mm

Item No.: 3351 0026



Instrument table
supportLine plus
height adjustable
930 – 1,185 mm

Item No.: 3351 0045



Cover drape for
treatment chair,
stayClean
2,000x730 mm,
box à 160 pieces

Item No.: 3034 0014

Our classic

It represents proven and time-tested technology in a modern design, it is deliberately low-tech, and it offers an extremely attractive price-performance ratio.

Its chief benefits include space-saving design and outstanding maneuverability coupled with a lean range of easy-to-manage functions.

Do you want flexible use in confined spaces with power-supply independent battery operation?

Then you should go for our classic: The **500 XLE** or **500 XLE comfort**, for optimal combination with our **surgiLine** and **surgiTrend** surgeon's chairs.

performanceLine systems are designed for user satisfaction

Designed for continuous use in serially equipped operating rooms with high patient turnover, the **performanceLine** satisfies every user thanks to its easy handling before, during and after the surgery.



An award-winning "Preventive Technology", the **performanceLine** works hard to protect your surgical staff from back problems, thanks to its lightweight construction and easy maneuverability.

**Less is more -
more benefits**

500 XLE comfort

Item No.: 1500 0006
+ 3037 0080



500 XLE

Item No.: 1500 0006



Ophthalmic surgery



Implantology
Oral surgery
Maxillofacial surgery



ENT surgery

500 XLE



Item No.: 1500 0006

The perfect reclining treatment chair for rotation systems in outpatient operating rooms.

**Powerful
and agile**



MED.TEC at its highest level

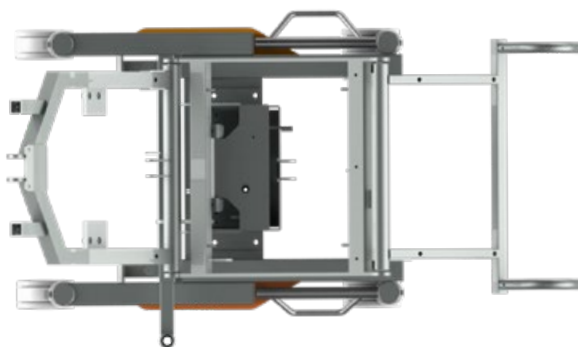
Double castors

Four fully rotating double-run castors for back-friendly, easy rolling motion.



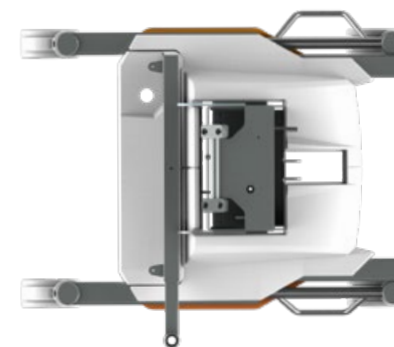
Chassis/frame

Precision steel frame chassis, zinc primed with anthracite textured paint coating.



Chassis cover/upholstery

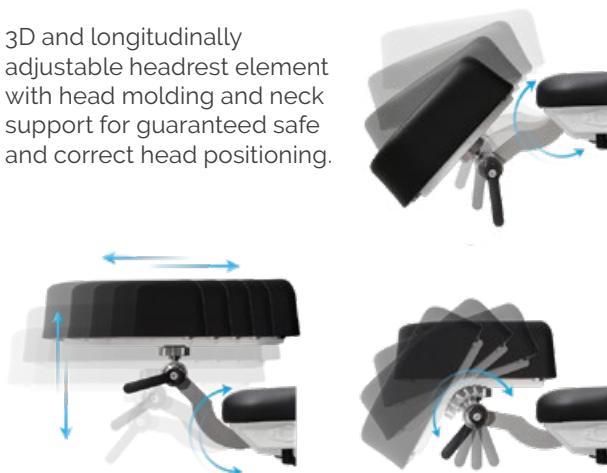
The mirror-finish plastic cover panels with their scratch-resistant and impact-modified surface finish are extremely hygienic and easy to disinfect.



Precise positioning of the head part

Headrest

3D and longitudinally adjustable headrest element with head molding and neck support for guaranteed safe and correct head positioning.



Components

Headrest with ball joint and more

Discover additional features and extensive components on page 34-35.

Item No.: 3351 1021



Sterile adjustment by surgeon/maximum legroom

Flexible reaction by foot control

Removable foot keypad for infinite electronic height and head adjustment including reactivation button from the stand-by mode.



Positioning



The 500 **XLE** treatment chair is designed for ergonomic and comfortable patient positioning and treatment, particularly for outpatient surgical techniques. It offers versatile adjustment of the head, back, seat and leg sections and overall chair height for patient transport.

- Eight freely programmable memory positions
- CPR button
- Reset button
- Auto run function
- Battery charge indicator



Hand control

Multi-functional manual keypad

Battery charge indicator

Reset button

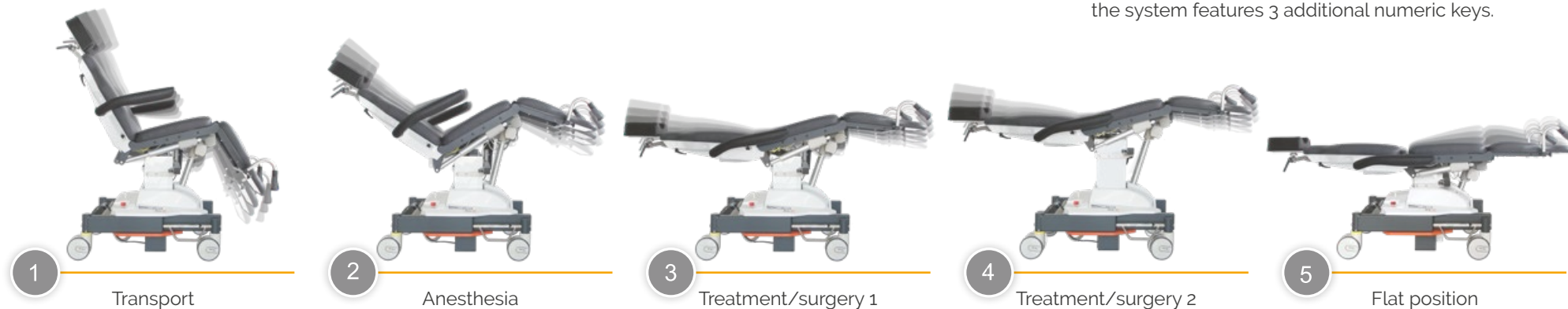
CPR button

Auto run function

8 free configurable memory positions

Positioning by hand control

Standard recommended memo keys



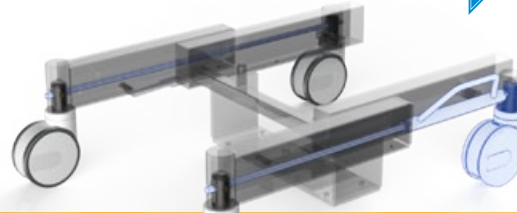
For additional desired Memo positions, the system features 3 additional numeric keys.

Mechanical maneuvering aid on the chassis

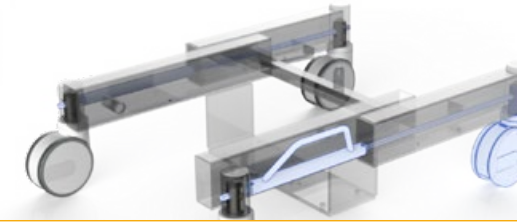
Operation via foot lever on the chassis

Activation of directional guidance

Pushing from
the head direction



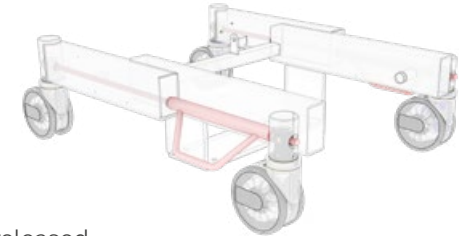
Pushing from
the foot direction



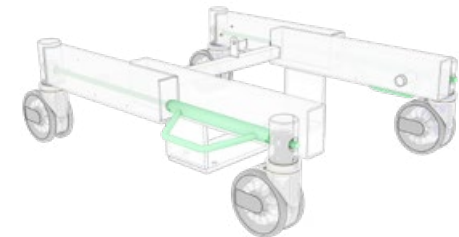
Braking system

Manually adjustable foot lever

Castors are
braked



Castors are released,
directional guidance is
deactivated



Push handles

Detachable push handles on the foot ends
for easy maneuvering.



Armrests

Hinged and removeable armrests for easy entry
and exit as well as transfer of the patient.



Components

Additional handles/shoulder parts and more

Discover additional features and
extensive components on page 34-35.



500 XLE comfort

Item No.: 1500 0006
+ 3037 0080

Our 500 **XLE** with extra thick upholstery, integrated knee support cushion and flattened neck area - for extra reclining comfort.

**Outstanding comfort,
particular flexibility.**



Upholstery

Comfort

Thick comfort upholstery and integrated knee support cushion, individually positionable to suit every patient's body height. The treatment chair featuring comfort upholstery is particularly well suited for longer surgical procedures (e.g. retina surgery).

Available in a wide variety of colors. Please refer to page 100 for our complete range of colors.



Flexibility in every detail

Headrest

The flattened back cushion of the Comfort upholstery in the neck area offers maximum freedom of movement for the headrest.



Integrated knee support cushion

Optimum patient comfort thanks to the integrated knee support cushion which can be easily adjusted to accommodate any patient height.



An optional legrest extension can be attached when treating tall or very tall patients.



Components

Foot part extension

Adjustable foot part extension incl. foot support for easier entry and exit of the patient.



Besides, entry height is reduced by 80 mm.

Item No.: 3351 1028



190 mm

Technical specifications



Chassis

- Frame profile 90 x 50 mm
- Outside length 785 mm
- Outside width incl. lever 720 mm
- Steel tube frame, powder-coated elegant anthracite matte finish
- Brake operable from both sides and acting on two castors each; two castors featuring independent directional steering function
- Double rimmed castors \varnothing 125 mm
- Detachable foot keypad (total, head up/down)
- Emergency stop button
- Visible screws are made of stainless steel
- With equipotential bonding connection

Upper frame

- 4-part support frame (head, back, seat, leg part)
- Removeable upholstery
- Width of upholstery 610 mm
- Width incl. armrests 850 mm
- Length 1.760 – 1.900 mm
(incl. legrest extension) + 190 mm

	Angle	Dimensions (L x W)
• Head part	-29°/+35°	255 x 245 mm
• Back part	0°/+83°	610 x 610 mm
• Seat part	-5°/+35°	450 x 610 mm
• Leg part	0°/-77°	510 x 610 mm
• Height adjustment		625 – 925 mm (comfort) 655 – 955 mm
• Armrests	0°/+180°	(2x) 470 x 75 mm
• Entry height		(standard) 580 mm/500 mm (incl. legrest extension) (comfort) 610 mm/530 mm (incl. legrest extension)
• Legroom		520 – 820 mm
• Trendelenburg		-12°/Reverse Trendelenburg +5°

Electrical control

- All components according to IP54
- Hand control with 8 individually programmable memory positions, auto run function, reset button
- Foot keypad with 4 foot switches and reactivation button

Electric Drives

- Head, back, seat, leg part, total up/down
- Trendelenburg/Reverse Trendelenburg

Lifting column

- Max. lifting 300 mm
- Max. load 250 kg
- Motors IP54 with HAL sensors, to be memorized

Trendelenburg/Reverse Trendelenburg/CPR



Back part/leg part



Height adjustment



Powerful accumulators

- Battery box with 2 batteries (lead-gel), pollution free, maintenance-free, cadmium-free 2 x 12 V, 7,2 Ah
- As back-up-system exchangeable without tools
- Acoustic low voltage signal for discharge protection
- Universal battery charger Input: 100 – 240 V Output: 30 V

Operating time per battery charge

- Measured by operating circle (Prepare-Operate-Recover) 100 OPs
- Quantity of operating circles depends on individual operation

Further technical details

- Chair has detachable, swiveling armrests made completely with PUR foam
- Detachable seat for service friendly access to electric components

Max. load 250 kg

Weight 135 kg

Subject to technical modifications.

Mains-free operation

Easy recharging of the equipment thanks to charging adapter and integrated battery charger circuit board.



Equipment protection

Cover drape *stayClean*

2,000 x 730 mm, box á 160 Pieces
4 x 40 Pieces

Item No.: 3034 0014

Page 64



Simple battery replacement

Additional safety due to replaceable battery box (back-up system **Item No.: 3047 0000**). Discharged battery box can be replaced quickly.



Color card

Standard color

500 **XL**

anthracite **Item No.: 3037 0052**

500 **XLE comfort**

anthracite (main color)
+ chrome (accent color)
Item No.: 3037 0092

"Tundra skai"

Page 102

"Pandoria Plus"

Page 103





Components

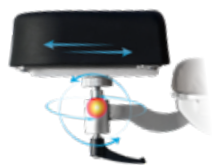


500 XLE
Item No.: 1500 0006



500 XLE comfort

Comfort upholstery incl. integrated knee roll, upcharge
Item No.: 1500 0006 + 3037 0080



Headrest with ball joint,
360° all-round adjustment,
factory-fitted

Item No.: 3351 1021



Side parts right and left,
swiveling incl. locking,
upholstered,
580x200 mm

Item No.: 3351 0012



Norm rail seat part

Item No.: 3351 0047



Side parts right and left,
580x200 mm,
incl. quick-release clamp for
mounting on norm rail
(norm rail 3351 0047 not
included)

Item No.: 3351 0050



Backup battery

Item No.: 3047 0000



Pushing handles back part,
pair

Item No.: 3351 0046



Pushing handles back part,
pair

Item No.: 3351 0017



Anesthesia arm board
with universal joint,
with arm secure straps

Item No.: 3351 0011



Flexible surgical drape
support rod

Item No.: 3205 0000



Flexible surgical drape
support rod with air
connection

Item No.: 3206 0000



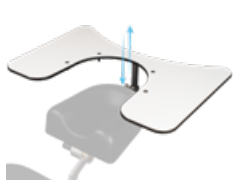
Hand control holder
for attachment onto an
I.V. Pole Ø 25/18 mm, PVC

Item No.: 3351 1022



Hand control holder,
PVC
(component holder
3351 0037 not included)

Item No.: 3351 1023



Wrist rest
550x370 mm,
height adjustable,
incl. mounting plate,
adjustment 115 mm

Item No.: 3209 0000



Head part bumper
stainless steel

Item No.: 3028 0000



Wrist rest, adjustable,
incl. mounting plate
3013 0000,
adjustment 115 mm

Item No.: 3014 0000



Wrist rest, adjustable, tiltable,
incl. mounting plate
3013 0000,
adjustment 115 mm

Item No.: 3014 0005



Mounting plate stainless steel,
for wrist rest 3014 0000,
3014 0005 and 3209 0000

Item No.: 3013 0000



Head fixation pillow with
hollow (rubins pillow),
410x250 mm, height 100 mm,
factory-fitted

Item No.: 3022 0000



Facial pillow,
horseshoe-shaped,
incl. adapter plate,
factory-fitted

Item No.: 3351 1016



Instrument table
500x300x15 mm, height
adjustable, swiveling,
detachable, incl. adapter
(component holder
3351 0037 not included)

Item No.: 3065 0000



Shoulder parts
right and left
500 XLE
Item No.: 3071 0000

500 XLE comfort
Item No.: 3071 0001



Knee half roll,
600x280x140 mm,
PUD-coated

Item No.: 3019 0000



Knee roll round,
500x150 mm,
PUD-coated

Item No.: 3050 0000



Wrist secure straps,
pair

Item No.: 3015 0000



Body strap with Velcro straps,
2-piece

Item No.: 3083 0000



Foot part extension
incl. foot support,
factory-fitted,
upcharge

Item No.: 3351 1028



Foot protection foil

Item No.: 3092 0001



IV. Pole stainless steel
Ø 25/18 mm,
one-hand height adjustable
1.070–1.660 mm, 4 hooks,
max. 2 kg/hook, glass and
holder (component holder
3351 0037 not included)

Item No.: 3068 0000



Component arm stainless
steel, swiveling,
incl. extendible IV. Pole
Ø 25 mm

Item No.: 3024 0014



Component holder,
stainless steel

Item No.: 3351 0037



Cylinder holder

Item No.: 3072 0002



Instrument table
supportLine
height adjustable 730–985 mm
Item No.: 3351 0026

supportLine plus
height adjustable 930–1.185 mm
Item No.: 3351 0045



Cover drape for
treatment chair,
stayClean
2.000x730 mm,
box à 160 pieces

Item No.: 3034 0014

What procedures will you perform?

Excellent functionality at minimum cost for successful outcomes in the operating room. Mobile options for use in any size facility. Keep patient care number one on your priority list.

500 XLS - essential tool in oral and maxillofacial surgery

It has never been so simple to adapt new technology in your daily workflow.

- Multifunctional horseshoe shaped headrest element featuring two-dimensional and longitudinal adjustment
- Power supply-independent battery box with integrated emergency stop button

500 ECO - ideal for I.V.I. treatments

Basic budget friendly treatment chair for walk-in OR concepts and Intravitreal Injection (I.V.I.) treatments.

- JUST WALK-IN OR: in 5-6 seconds in OR-Position
- Direct power connection

400 XL - highly functional basic foot hydraulic treatment table

This entry-level model is based on a rugged and easy-to-use technology. Its function is independent of batteries to keep procurement costs low on the one hand and ensures a long service life on the other hand.

- Comfortable three-piece cover surface
- Can be used in any location

**Functionality
in a nutshell**

500 XLS

Item No.: 1500 0005



500 ECO

Item No.: 1500 0008



400 XL

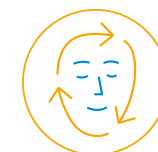
Item No.: 1400 0001



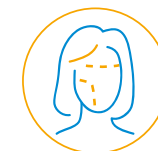
Implantology
Oral surgery
Maxillofacial surgery



I.V.I. treatment
Ophthalmic surgery



Dermatology



Aesthetic surgery
Plastic surgery
Hair transplantation

500 XLS



Item No.: 1500 0005

Perfect for oral and maxillo-facial surgery treatments, with multifunctional horseshoe-shaped headrest element. For comfortable patient positioning for applications and treatments requiring prone patient positioning.

Our specialist
for ENT treatment



Positioning

Standard recommended memo keys



1

Transport



2

Anesthesia



3

Treatment/surgery 1



4

Flat position

Precise positioning of the head part

Headrest

Multifunctional headrest element featuring two-dimensional and longitudinal adjustment. Horseshoe shape also allows treatments in prone position.



Braking system

Mechanical. Easy to handle.

Rugged moving gear featuring 2 central braking steering castors and 2 rigid castors for high stability combined with easy maneuverability.



Positioning by hand control

Multi-functional manual keypad



Battery charge indicator



Reset button

CPR

CPR button



Auto run function



8 free configurable memory positions



Positioning by foot control

Removable foot keypad

for back, seat and height adjustment, including on-off button, 3 memory positions, and a reset key.



Technical specifications



Chassis

- Frame profile 60 x 30 mm
- Length chassis incl. lever 1,020 mm
- Width chassis outside 710 mm
- Outside width incl. arm rests 830 mm
- White paint finish
- Central brake, operable from both sides
- 2 pcs. double castors \varnothing 100 mm
- 2 pcs. rigid castors \varnothing 150 mm
- Foot keypad, removable
(for overall/back part/seat adjustment;
reset button; auto-run function; 3 memory positions)
- Emergency stop button
- With equipotential bonding connection

Seat part

Upper frame

- 4-part support frame (head, back, seat, leg part)
- Length 1,930 – 2,160 mm
- Width of upholstery 610 mm
- Entry height 580 mm
- Removeable upholstery

	Angle	Dimensions (L x W)
• Head part	0°/+180°	275 x 280 mm
• Back part	0°/+84°	610 x 610 mm
• Seat part	-3°/+32°	510 x 600 mm
• Leg part	0°/-70°	490 x 525 mm
• Height adjustment		580 – 860 mm
• Armrests	0°/+180°	455 x 75 mm

Electrical control

- All components according to IP54
- Hand control with 8 individually programmable memory positions, auto run function, reset button
- Foot keypad

Electric Drives

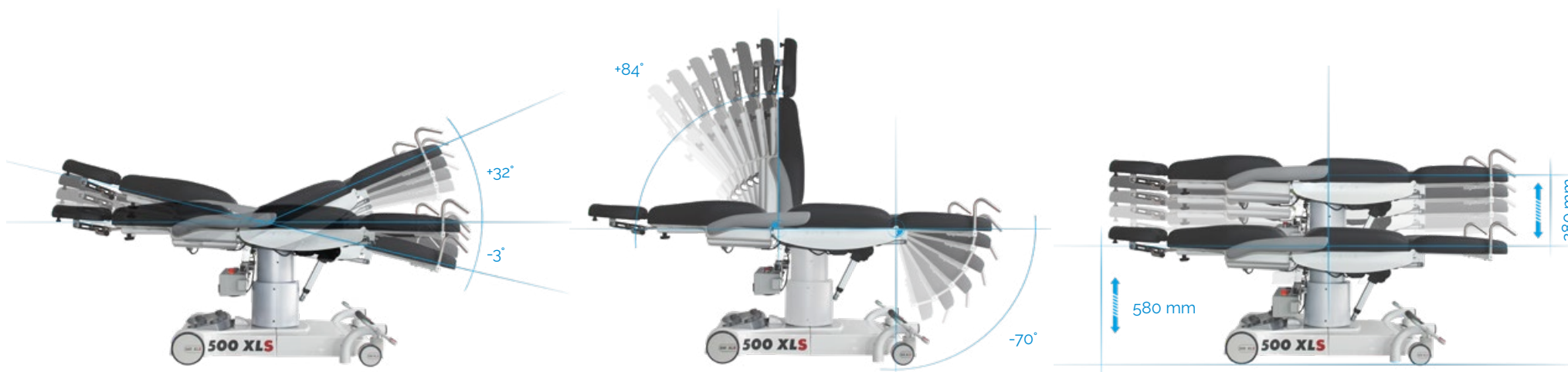
- Back, seat, leg part, total up/down
- Shock position

Lifting column

- Max. lifting 280 mm
- Max. load 200 kg
- Motors IP54 with HAL sensors, to be memorized

Back part/leg part

Height adjustment



Powerful accumulators

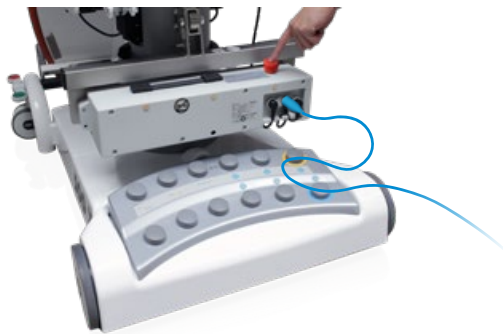
- Battery box with 2 batteries (lead-gel), pollution free, maintenance-free, cadmium-free 2 x 12 V, 7,2 Ah
- As back-up-system exchangeable without tools
- Acoustic low voltage signal for discharge protection
- Universal battery charger Input: 100 – 240 V
Output: 30 V

Operating time per battery charge

- Measured by operating circle (Prepare-Operate-Recover) 100 OPs
- Quantity of operating circles depends on individual operation

Mains-free operation

Easy recharging of the equipment thanks to charging adapter and integrated battery charger circuit board.



Simple battery replacement

Extra security thanks to exchangeable battery box. Easy replacement of discharged battery boxes.



Further technical details

- Chair has detachable, swiveling armrests made completely with PUR foam
- All touchable metal parts are grounded
- Detachable seat for service friendly access to electric components

Max. load 200 kg

Weight 100 kg

Subject to technical modifications.

Equipment protection

Cover drape *stayClean*

2,000 x 730 mm, box á 160 Pieces
4 x 40 Pieces

Item No.: 3034 0014

Page 64



Color card

Standard color

anthracite Item No.: 3037 0052

"Tundra skai"
Page 102

"Pandoria Plus"
Page 103



Components



FUNCTIONAL
CLASS



500 XLS

Item No.: 1500 0005



Backup battery

Item No.: 3047 0000



I.V. Pole stainless steel
Ø 25/18 mm, one-hand
height adjustable
1,070 – 1,660 mm,
4 hooks, max. 2 kg/hook,
glass and holder
(component holder
3351 0037 not included)

Item No.: 3068 0000



Hand control holder,
PVC
(component holder
3351 0037 not included)

Item No.: 3351 1023



Hand control holder
for attachment onto an
I.V. Pole Ø 25/18 mm, PVC

Item No.: 3351 1022



Inlay head pillow

Item No.: 3325 0000



Anesthesia arm board with
universal joint,
with wrist secure straps

Item No.: 3078 0000



Norm rail 300 mm,
seat part

Item No.: 3321 0000



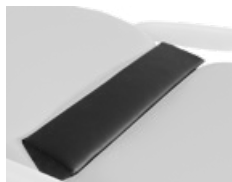
Norm rail,
back part

Item No.: 3320 0000



Instrument table
500x300x15 mm, height
adjustable, swiveling,
detachable, incl. adapter
(component holder
3351 0037 not included)

Item No.: 3065 0000



Trapeze cushion, wedge,
for back/seat part

Item No.: 3022 0005



Knee half roll,
600x280x140 mm,
PUD-coated

Item No.: 3019 0000



Knee roll round,
500x150 mm,
PUD-coated

Item No.: 3050 0000



Wrist secure straps,
pair

Item No.: 3015 0000



Body strap with Velcro straps,
2-piece

Item No.: 3083 0000



Side rails right and left,
swiveling incl. locking,
upholstered

Item No.: 3351 1036



Foot protection foil

Item No.: 3326 0000



Component arm stainless
steel, swiveling,
incl. extendible I.V. Pole
Ø 25 mm

Item No.: 3024 0014



Component holder,
stainless steel

Item No.: 3351 0037



Pushing handles,
pair

Item No.: 3069 0000



Flexible surgical drape
support rod
with air connection,
incl. norm rail and
mounting clamp

Item No.: 3351 0009



Flexible surgical drape
support rod,
incl. norm rail and
mounting clamp

Item No.: 3351 0010



Instrument table
supportLine
height adjustable 730-985 mm

Item No.: 3351 0026

supportLine plus
height adjustable 930-1185 mm
Item No.: 3351 0045



Cover drape for
treatment chair,
stayClean
2.000x730 mm,
box à 160 pieces

Item No.: 3034 0014

500 ECO



Item No.: 1500 0008

Perfect for I.V.I. treatments. Direct power connection and the integrated power supply unit enable the more powerful operation with high adjustment speed.

Out of the box
solution

DIRECT POWER CONNECTION



Positioning

Efficient, comfortable and fast!



Entering



Patient positioning



5 – 6 SEC
IN OR-POSITION

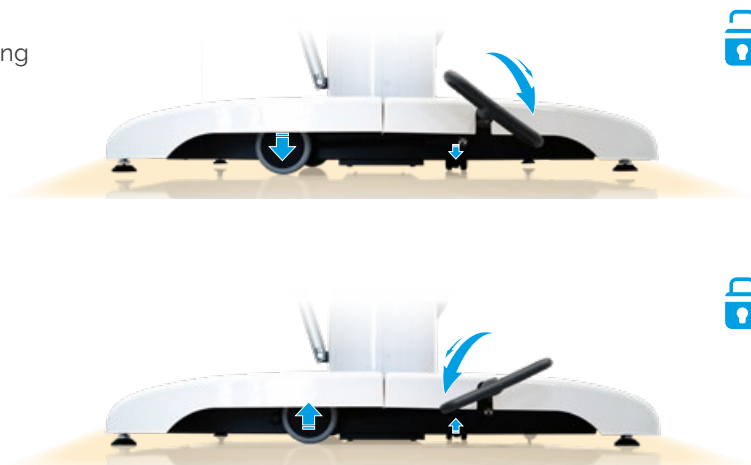
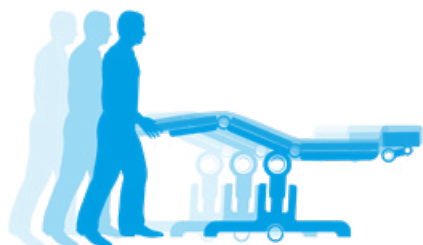


Surgery position

Sturdy base with mono lifting column

Stability/maneuvering aid

Sturdy stand with three extendable castors combines high stability with simple maneuvering aid (in the event of a change of a location).



Precise positioning of the head part

Headrest

Mechanical adjustment options for comfortable and fine-tuned positioning of the patient's head, adapted to his individual body dimensions.



Positioning by hand control

Multi-functional manual keypad



Reset button



CPR button



Auto run function



8 free configurable memory positions



Positioning by foot control

Optional: foot switch

For 2 memory positions (M1/M2) Item No.: 3351 1029



Technical specifications



Chassis

- Outside length 910 mm
- Outside width incl. foot pedal 600 mm
- Outside width incl. arm rests 845 mm
- White paint finish
- 2 pcs. double castors \varnothing 100 mm
- 2 pcs. rigid castors \varnothing 35 mm
- Optional: foot keypad (2 memory positions, M1/M2)

Upper frame

- 4-part support frame (head, back, seat, leg part)
- Length 1,950 – 2,230 mm
- Width of upholstery 600 mm
- Entry height 550 mm
- Removeable upholstery

	Angle	Dimensions (L x W)
• Head part	$-27^{\circ}/+180^{\circ}$	280 x 420 mm
• Back part	$-23^{\circ}/+85^{\circ}$	710 x 600 mm
• Seat part	$-3^{\circ}/+28^{\circ}$	510 x 600 mm
• Leg part	$0^{\circ}/-75^{\circ}$	490 x 530 mm
• Height adjustment		615 – 890 mm
• Armrests	$0^{\circ}/+180^{\circ}$	455 x 75 mm
• Legroom surgeon		485 – 760 mm
• CPR/flatposition	(height back part)	600 mm

Electrical control

- All components according to IP54
- Hand control with 8 individually programmable memory positions, auto run function, reset button
- Foot keypad (optional)

Electric Drives

- Back, seat, leg part, total up/down

Lifting column

- Max. lifting 275 mm
- Max. load 240 kg
- Motors IPX4 with HAL sensors, to be memorized

Seat part/CPR

Back part/leg part

Height adjustment/legroom



Application example

assistTrend
+ armrest pair Item No.: 2500 0002
+ Item No.: 3300 0000

500 *ECO* Item No.: 1500 0008



Further technical details

- Chair has detachable, swiveling armrests made completely with PUR foam
- Detachable seat for service friendly access to electric components

Max. load 240 kg

Weight 90 kg

Subject to technical modifications.

Equipment protection

Paper rolls *stayClean roll*

White embossed, 2-ply, 50 cm x 50 m
Carton à 9 pieces Item No.: 3034 0021

Page 67



Upholstery/color card

Standard color

anthracite (main color)
+ chrome (accent color)
Item No.: 3037 0092

"Tundra skai"
Page 102

"Pandoria Plus"
Page 103



Components



FUNCTIONAL
CLASS



500 ECO

Item No.: 1500 0008



Multifunctional headrest

Item No.: 3351 1034



Foot keypad to activate the two free configurable memory positions 1 and 2 of hand control

Item No.: 3351 1029



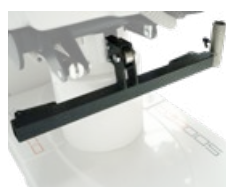
Paper roll holder

Item No.: 3351 1031



stayClean roll
Paper rolls, white embossed, 2-ply, 50 cm x 50 m, carton à 9 pieces

Item No.: 3034 0021



Component mounting support, powder coated with component holder stainless steel

Item No.: 3351 1033



Component holder, stainless steel (component mounting support 3351 1033 not included)

Item No.: 3351 0037



Hand control holder, PVC (component mounting support 3351 1033 not included)

Item No.: 3351 1023



Component arm stainless steel, swiveling, incl. extendible I.V. Pole Ø 25 mm (component mounting support 3351 1033 not included)

Item No.: 3024 0014



I.V. Pole stainless steel Ø 25/18 mm, one-hand height adjustable 1,070 – 1,660 mm, 4 hooks, max. 2 kg/hook, glass and holder (component mounting support 3351 1033 and component holder not included)

Item No.: 3068 0000



Hand control holder for attachment onto an I.V. Pole Ø 25/18 mm, PVC

Item No.: 3351 1022



Side rails right and left, swiveling incl. locking, upholstered

Item No.: 3351 1036



Anesthesia arm board with universal joint, with wrist secure straps

Item No.: 3078 0000



Norm rail 300 mm, seat part

Item No.: 3321 0000



Instrument table 500 x 300 x 15 mm, height adjustable, swiveling, detachable, incl. adapter (component mounting support 3351 1033 not included)

Item No.: 3065 0000



Foot protection foil

Item No.: 3326 0000



Trapeze cushion, wedge, for back/seat part

Item No.: 3022 0005



Knee roll round, 500 x 150 mm, PUD-coated

Item No.: 3050 0000



Knee half roll, 600 x 280 x 140 mm, PUD-coated

Item No.: 3019 0000



Body strap with Velcro straps, 2-piece

Item No.: 3083 0000



Inlay head pillow

Item No.: 3325 0000



Instrument table *supportLine* height adjustable 730 – 985 mm

Item No.: 3351 0026



Instrument table *supportLine plus* height adjustable 930 – 1,185 mm

Item No.: 3351 0045

400 XL



Item No.: 1400 0001

Highly functional, basic hydraulic treatment table. The great freedom of movement and ample legroom for optimum access to the patients. The **400 XL** treatment table can be rotated by 360 degrees to also allow even lateral movements. Our entry-level model is based on a rugged and easy-to-use technology. In contrast to our electromechanical models, its function is independent of batteries. This keeps procurement costs low on the one hand and ensures a long service life on the other hand.



**Can be used
in any location**

**Easy to service
and maintain**

**Outstanding
resistance to tipping**

**Ergonomically
shaped push handles**

Designed for optimized function

Chassis

Gentle and stable hydraulic system for patient positioning. Foot pedal for hydraulic adjustment of head, back, leg part and overall up/down adjustment – guaranteed to last.



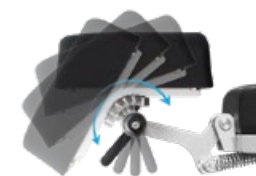
Double castors

Large double castors for easy moving and maneuvering by one person, even in confined spaces. Effortless directional stability - direction-setting castor, manually adjustable via foot pedal. Central foot brake acting on 4 castors.



Headrest

3D and longitudinally adjustable headpart with head molding and neck support for guaranteed safe and correct positioning of the head.



General

- Comfortable three-piece cover surface
- Wide and comfortable upholstery in anthracite
- Low entry height
- Suitable even for very tall patients



Technical specifications

Chassis

- | | |
|-----------------------------------|------------|
| • Frame profile | 50 x 50 mm |
| • Outside length | 1,530 mm |
| • Outside width | 750 mm |
| • Castor, electrically conductive | ø 150 mm |

Lifting column

- | | |
|----------------------------------|-------------------|
| • Foot hydraulic | |
| • Height adjustment min./max. | 650/1,030 mm |
| • Max. lifting force | 2,000 N |
| • Leg part lifting force | 1,500 N |
| • Back part lifting force | 1,200 N |
| • Head part lifting force | 500 N |
| • Operating pressure | 120 bar |
| • Hydraulic oil, DTE 10 EXCEL 32 | approx. 0.7 liter |

Upper frame

- | | |
|---|------------------|
| • 3-part support frame (head, back, leg part) | |
| • Upholstery | 80 mm |
| • Length | 1,930 – 2,060 mm |
| • Width | 700 mm |
| • Head part angle adjustment | -28°/+21° |
| • Back part angle adjustment | -13°/+58° |
| • Leg part angle adjustment | 0°/+13° |
| • Trendelenburg | -13° |
| • Height adjustment range | 380 mm |
| • Standard stainless steel side rails, both sides | 25 x 10 mm |
| • Entry height | 650 mm |
| • Legroom surgeon | 500 – 880 mm |

Max. load 175 kg

Weight 140 kg

Subject to technical modifications.

Technical dimensions

Trendelenburg



Back part



Height adjustment



Components



FUNCTIONAL
CLASS



400 XL
Item No.: 1400 0001

Color card

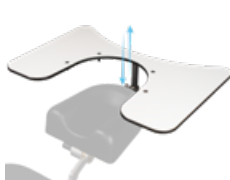
Standard color

anthracite Item No.: 3037 0052

"Tundra skai"
Page 102

"Pandoria Plus"
Page 103





Wrist rest
550x370 mm,
height adjustable,
incl. mounting plate,
adjustment 115 mm

Item No.: 3209 0000



Head part bumper
stainless steel

Item No.: 3028 0000



Wrist rest, adjustable,
incl. mounting plate
3013 0000,
adjustment 115 mm

Item No.: 3014 0000



Wrist rest, adjustable, tiltable,
incl. mounting plate
3013 0000,
adjustment 115 mm

Item No.: 3014 0005



Mounting plate stainless steel,
for wrist rest 3014 0000,
3014 0005 and 3209 0000

Item No.: 3013 0000



Head fixation pillow with
hollow (Rubins pillow),
410x250 mm, height 100 mm,
factory-fitted

Item No.: 3022 0000



Anesthesia arm board
with universal joint,
incl. mounting clamp

Item No.: 3011 0000



Side parts right and left,
580x200 mm,
incl. quick-release clamp for
mounting on norm rail

Item No.: 3351 0050



Knee half roll,
600x280x140 mm,
PUD-coated

Item No.: 3019 0000



Knee roll round,
500x150 mm,
PUD-coated

Item No.: 3050 0000



Wrist secure straps,
pair

Item No.: 3015 0000



Body strap with Velcro straps,
2-piece

Item No.: 3083 0000



Mounting clamp
stainless steel

Item No.: 3026 0000



Flexible surgical drape
support rod, with air
connection (mounting clamp
3090 0000 not included)

Item No.: 3033 0000



Flexible surgical drape
support rod (mounting clamp
3090 0000 not included)

Item No.: 3032 0000



Mounting clamp polished
aluminium, with quick clamp
lever for norm rail 25x10 mm,
incl. locking device

Item No.: 3090 0000



Instrument table
supportLine
height adjustable
730 – 985 mm

Item No.: 3351 0026



Instrument table
supportLine plus
height adjustable
930 – 1,185 mm

Item No.: 3351 0045

motionLine



Item No.: 1700 0000

The ergonomic transport and relaxing chair for extra patient comfort and wellness flair.

With many practical details for patients and caregivers: Low entry height, synchronously adjustable resting position, comfortable bolster and lumbar support, comfortable push handles and hanging basket for patient property.



Maximum patient comfort

Headrest

Flexible, height-adjustable neck support cushion for enhanced patient comfort.



Double castors

Infinitely adjustable back, leg part and seat adjustment via gas pressure spring with foot release. Castor brakes on the left and right 360-degree rotating castors hold the chair safely in place.



Insert basket

Practical storage basket for patient medical records and belongings.



Armrests

Hinged and removable armrests for easy entry and exit as well as transfer of the patient.



Push handles

Ergonomically shaped, durable, non-sliding rubber grips.



Technical specifications

Chassis

- Laser frame profile 5 mm
- Chassis length 1,000 mm
- Width incl. wheels 650 mm
- Width incl. armrest 680 mm
- Wheel/casters diameter \varnothing 300/125 mm

Lifting column

- | | Angle | Dimensions (LxW) |
|-------------|-------|------------------|
| • Back part | +80° | 830 x 510 mm |
| • Seat part | +30° | 530 x 510 mm |
| • Leg part | -82° | 380 x 510 mm |
-
- Upholstery height 50/90 mm
 - Total length 1,750 mm
 - Armrests 0°/+180° height 810 mm
 - Entry height 610 mm
 - Chair height max. 1,360 mm

Max. load

135 kg

Weight

56 kg

Subject to technical modifications.

Standard color

anthracite Item No.: 3037 0052

"Tundra skai"

Page 102

"Pandoria Plus"

Page 103



Technical dimensions

Back part/leg part



motionLine-E



Item No.: 1700 0001

Patient transfer and resting position made even easier.

The ergonomically designed transport and relaxing chair for maximum patient comfort. All the benefits of our *motionLine* model in combination with an electrically assisted position control – with a handy, cable-connected remote control.



Electronically adjustable

Battery box

Easy recharging of the equipment thanks to charging adapter and integrated battery charger circuit board. Extra security thanks to exchangeable battery box. Easy replacement of discharged battery boxes.



Hand control

Synchronized back, leg part and seat adjustment – made simple and comfortable by the hand control



Functions

Synchronized back and leg part angle adjustment



Seat angle adjustment



Auto run function chair position



Auto run function shock position



Armrests

Hinged and removable armrests for easy entry and exit as well as transfer of the patient.



Push handles

Ergonomically shaped, durable, non-sliding rubber grips.



Technical specifications

Chassis

- Laser frame profile 5 mm
- Chassis length 1,000 mm
- Width incl. wheels 650 mm
- Width incl. armrest 680 mm
- Wheel/caster diameter ø 300/125 mm
- Emergency stop button

Lifting column

- Electronic control system per hand control
 - Synchronized back-/legrest and seat adjustment
- | | Angle | Dimensions (L x W) |
|---------------------|----------|--------------------|
| • Back part | +80° | 830 x 510 mm |
| • Seat part | +30° | 530 x 510 mm |
| • Leg part | -82° | 380 x 510 mm |
| • Upholstery Height | | 50/90 mm |
| • Total length | | 1,750 mm |
| • Armrests | 0°/+180° | height 810 mm |
| • Entry height | | 610 mm |
| • Chair height max. | | 1,360 mm |

Technical dimensions

Back part/leg part



Battery unit

- Battery box with 2 batteries (lead-gel), pollution free, maintenance-free, cadmium-free 2 x 12 V, 7.2 Ah
- Universal battery charger: Input: 100 – 240 V
Output: 30 V

Max. load

135 kg

Weight

64 kg

Subject to technical modifications.

Standard color

anthracite Item No.: 3037 0052

"Tundra skai"
Page 102

"Pandoria Plus"
Page 103



Components



motionLine
Item No.: 1700 0000



motionLine-E
Item No.: 1700 0001



Backup battery,
motionLine-E

Item No.: 3047 0000



I.V. Pole stainless steel
Ø 25/18 mm, one-hand
height adjustable 1,070 –
1,660 mm, 4 hooks, max.
2 kg/hook, glass and holder
(adapter 3082 0000 not
included)

Item No.: 3068 0000



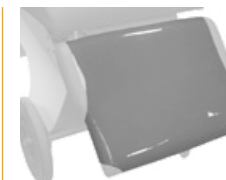
Instrument table
300x200x13 mm,
swiveling, detachable,
incl. adapter

Item No.: 3329 0000



Adapter

Item No.: 3082 0000



Foot protection foil

Item No.: 3319 0000





supportLine

Item No.: 3351 0026

The *supportLine* mobile instrument table is designed to be an ergonomic aid to supplement treatment and surgeon's chairs.

**The practical
little helpers**



Technical specifications

Chassis

- Footprint 680 x 400 mm
- 4 castors ø 50 mm

Lifting column

- Height adjustment 730 – 985 mm

Stainless steel tray

660 x 540 mm

Upper frame

715 x 540 mm

Weight

17,5 kg

Max. load

10 kg

Subject to technical modifications.

The perfect addition for your OR

Pneumatic spring technology/foot pedal

The integrated pneumatic spring technology enables the instrument tray to be stopped and positioned smoothly at a suitable working height for the surgeon. Infinitely variable height adjustment via foot pedal.





supportLine plus

Item No.: 3351 0045

The *supportLine*'s maneuverability, optimised stability and resistance to tipping, its stainless steel design for the user's operating area and its hard-wearing, hygienic surfaces are designed specifically for versatile use in the operating room. The *supportLine plus* mobile instrument table is a 20 cm higher version.



Technical specifications

Chassis

- Footprint 680x400 mm
- 4 castors ø 50 mm

Lifting column

- Height adjustment 930 – 1,185 mm

Stainless steel tray

660x540 mm

Upper frame

715x540 mm

Weight

17,5 kg

Max. load

10 kg

Subject to technical modifications..

Tray

The removable, high-quality stainless steel tray is heat-resistant, easy to clean and disinfect and offers plenty of space for holding surgical instruments with an area of 66 x 54 cm.



Push handle/double castors

Its wide push handle and maneuverable double castors make the *supportLine* easy to position.



Disposables



The **UFSK-OSYS** hygiene supplies.
Efficient equipment protection - recommended
by the manufacturer, because we know
best what suits our products.

Cover drapes

stayClean

Item No.: 3034 0014



Application example 500 XLE

Paper roll

stayClean roll

Item No.: 3034 0021



Preventive Disposables

The **UFSK-OSYS** hygiene supplies protect and preserve the patient, the user and also the surgical equipment.



Application example 500 **ECO**



stayClean

Cover drapes

Item No.: 3034 0014

2,000 x 730 mm, box á 160 Pieces, 4 x 40 Pieces

Treatment chairs – ready for the next patient in no time. Perfect fit.

**Equipment protection
made easy**



Application example 500 XLE

Equipment protection – cover drapes for treatment chairs

Perfect protection of the equipment

- Protection against corrosion
- Perfect-fit synthetic equipment protection including barrier function
- Minimized soiling of the upholstery
- With integrated headrest hood
- "Two layer" composite material made from PE film (underside) and PP non-woven flocking



Hygienic protection for the patient

- Disposable product, hygienically packed
- Pleasant soft feel
- Absorbent and tear-resistant
- Impermeable to liquids and waterproof

The functional disposable cover drape

Advantages

- Easy replacement of used drapes
- No sliding thanks to the hood
- Enormous time savings
- Low purchasing costs



Application



Application example 500 *XLE*



Application example *eyeForce*



stayClean roll

Paper roll

Item No.: 3034 0021
Carton á 9 pieces (à 50 cm x 50 m)

The *stayClean* roll tear-off cloths protect your treatment chairs and tables perfectly and quickly ensure hygiene. The perforated cellulose patient pads are particularly user-friendly as they can be easily unrolled and torn off, allowing controlled consumption.

**Efficient
& secure**



Example of use

500 *ECO*
+ Paper roll holder
+ *stayClean* roll

Item No.: 1500 0008
Item No.: 3351 1031
Item No.: 3034 0021

The practical disposable cloth from the roll

Perfect protection of the devices and practical hygiene protection for patients

- Thanks to its short perforation, the *stayClean* roll is suitable for all common treatment chairs and tables
- The 2-layer pulp is very absorbent and excellently suitable for everyday use for outpatient treatments
- The very soft and skin-friendly texture provides a pleasant feeling of lying and hygiene



Scope of delivery

9 rolls (à 50 cm x 50 m)
made of pure cellulose,
hygienically single packed

premiumLine



Our top models

As the fruit of our decades of experience in the field of ophthalmic and microsurgery, we have managed to design absolute high-end, top quality models. Allow yourself to be swept away by the innovative materials, the visionary shapes, the elegant design and the sophisticated extra functions.

Set new standards in your operating room!

Discover our *surgiForce* and *surgiForce light* models and allow yourself to be swept away by their economy, effectiveness and quality. These models stand for ultra-precise navigation within the operating field, sterile operation, and a comfortable, non-fatiguing work environment – for a work flow worthy being rated "Premium deluxe". They combine particularly well with our *premiumLine eyeForce* treatment chair.

Demand the best!



The "Preventive Technology" award reflects uncompromising lightweight construction, outstanding ergonomic operability and space-saving design. Back diseases of your operating theater staff are now a thing of the past. This is our contribution to effective health and safety in the workplace.

**High end quality
for microsurgery**

surgiForce

Comfort seat (Illustration) Item No.: 2600 0004
Formed seat Item No.: 2600 0008



surgiForce light

Comfort seat Item No.: 2600 0006
Formed seat (Illustration) Item No.: 2600 0009



Ophthalmic surgery



Neurosurgery
Microsurgery



ENT surgery

surgiForce



Item No.: 2600 0004 with Comfort seat
Item No.: 2600 0008 with Formed seat (Illustration)

That is high tech and high precision.

The ultimate surgeon's chair for microsurgery.

Sophisticated engineering, design and function down to the smallest detail. Amazing range of armrest adjusting functions: Turn it, tilt it, rotate it, extend it – to support each of the surgeon's arm movements with the greatest of ease! Ultra-precise navigation within the operating field, sterile operation, and a comfortable, non-fatiguing work environment – for a work flow worthy being rated "Premium de luxe".

MED.TEC at its highest level

Double castors

The five high-grade double castors are smooth-running and rotated by 360 degrees. This means no-limits mobility, especially in confined operating room spaces. *surgiForce's* central front castor in particular gives extra stability to keep the treating surgeons safely in place whenever they shift their bodyweight forward.



Chassis

The drive mechanism's base is made of cast aluminum. This means maximum stability and longevity and no-limits mobility. The material and workmanship meet the strictest sanitary requirements.



Plastic cover panels

The high-sheen plastic cover panels with their scratch-resistant and impact-modified surface finish are extremely hygienic and easy to disinfect. Abrasion-resistant corner guards (orange) made of synthetic rubber take the stress out of maneuvering *surgiForce* even at close quarters to other medical equipment.



Mains-free operation

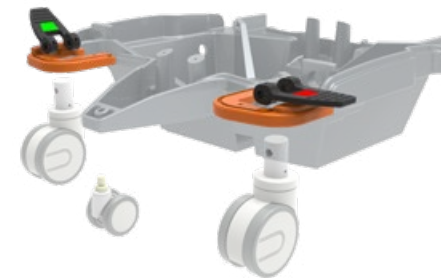
Accumulators

The charger-battery-control unit integrated in the drive mechanism permits mains-free operation at protective low voltage. Splash-protected charging socket on the bottom of the drive mechanism.



Braking system

The easy-to-reach and easy-to-use central brake acts on all four double castors to keep the *surgiForce* safely and reliably in the desired position.



Multi-function unit

Foot operated

To activate the multi-function unit, tap it with your foot. It allows the effortless powered height adjustments of the seats and armrests, independently of each other.

Intuitive foot keypad operation of the multi-function unit for powered seat height and armrest adjustment. Activation is signaled by acoustic and visual signals.



Sterile operation

Black pedal:
seat height adjustment

Gray pedal:
arm height adjustment



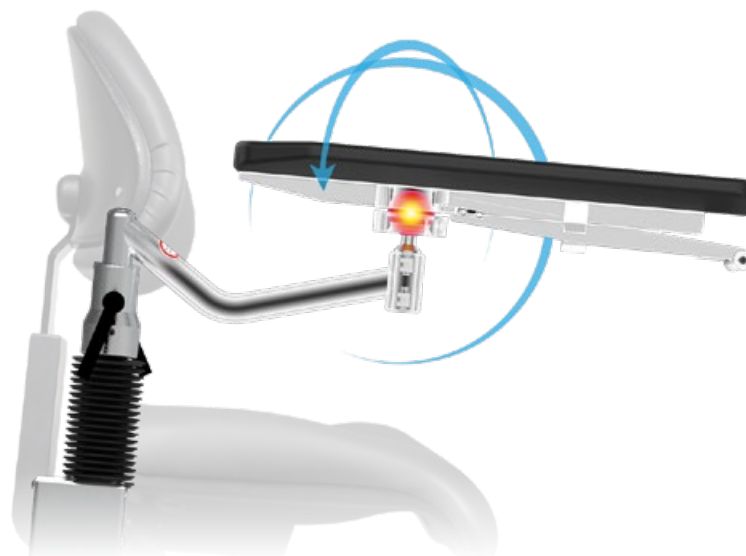
Armrests with “de luxe” feature

3D freedom of movement

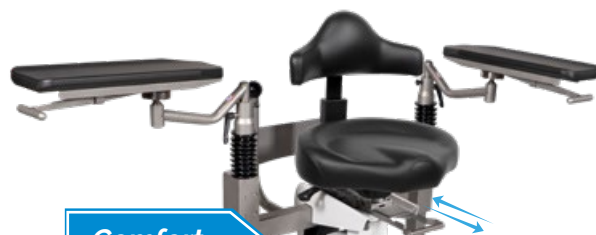
High-precision, maintenance-free ball joint for full 360-degree range armrest movements around all axes. Ultra-lightweight guide system for fast, efficient and vibration-proof adjustment of individual underarm positions.

Need to readjust *surgiForce* while maintaining sterile conditions? Not a problem! In addition to the foot keypad, *surgiForce* features so-called “one-hand triggers” underneath the armrests. Lift them briefly to adjust the height!

Angled armrest support for increased freedom of armrest movement around the lateral axis.



Seating systems



Comfort

The seating system Comfort: With mechanical individual adjustment functions. For a correct, back-friendly sitting and working posture, the seat surface or the seat depth can be adjusted by a sliding mechanism located underneath the seat.



Formed seat

The form seating system: With enlarged contact surface for more comfort and optimum weight distribution. The seat surface can be individually tilted forward and fixed together with the backrest. In addition, angle and height adjustment of the backrest ensure an ideal sitting posture.

Seat angle adjustment



Back angle adjustment



Back height adjustment



Seat angle adjustment



Back angle adjustment



Back height adjustment



Linear guides

To give you that extra margin of flexibility:
Armrests with linear guides! Applying pressure with your forearm will make the arms "glide" effortlessly in longitudinal direction while letting go will stop them by self-locking mechanism - available as an option.



Armrests

Made of molded PUR foam - pleasant to the touch, no slick leatherette cover - for guaranteed secure hold. Suitable for disinfectants.



Upholstery/color card

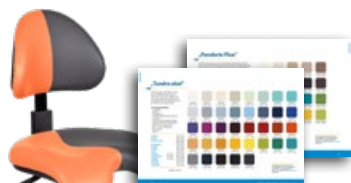
Standard color
black
Item No.: 3037 0235



"Periline" Page 105

Comfort

Standard color
anthracite
Item No.: 3037 0052



"Tundra skai" Page 102

"Pandoria Plus" Page 103

Formed seat

Technical specifications

Lifting column

- Lifting height of the seat 200 mm
- Lifting height of the armrests 130 mm
- Electromotive adjustment via the foot control elements

Dimensions maximum (LxWxH) incl. armrests

- with Comfort seat 860x750x1,190 mm
- with Formed seat 860x750x1,280 mm

Chassis

- Castors ø 100 mm
- 5th castor ø 65 mm
- Central brake acting on all four castors
- Emergency stop button

Battery unit

- Lead-gel battery, 2 pcs. 12 V, 2.9 A
- Universal battery charger: Input: 100 – 240 V
Output: 24 V

Seating systems:

Comfort | Formed seat

- Min. sitting height 595 mm | 580 mm
- Max. sitting height 795 mm | 780 mm
- Seat position adjustment forward/back 120 mm | 120 mm
- Seat angle adjustment -9°/+3° | -14°
- Back angle adjustment -21°/+2° | -19°/+5°
- Seat adjustment mechanism 113 mm | 113 mm

Weight

74 kg

Max. load

150 kg

Techn. Änderungen vorbehalten.

Technical dimensions

Seating system Comfort

Minimum

Maximum



Specifications in mm

Seating system Formed seat

Minimum

Maximum



PREMIUM
LINE

surgiForce light



Item No.: 2600 0006 with Comfort seat
Item No.: 2600 0009 with Formed seat (Illustration)

surgiForce light – extraordinary technology and materials in typical *surgiForce* premium design, in combination with other control elements:

A clearly structured twin foot keypad plus manually operated gas spring mechanisms in the arm supports – for surgeons wishing to precision-adjust their arm position with minimum fuss.



MED.TEC at its highest level

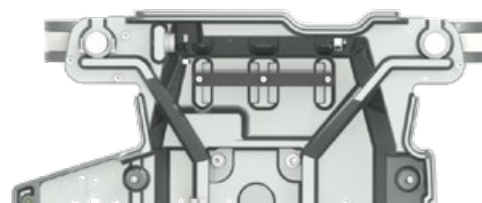
Double castors

The five high-grade double castors are smooth-running and rotated by 360 degrees. This means no-limits mobility, especially in confined operating room spaces. *surgiForce's* central front castor in particular gives extra stability to keep the treating surgeons safely in place whenever they shift their bodyweight forward.



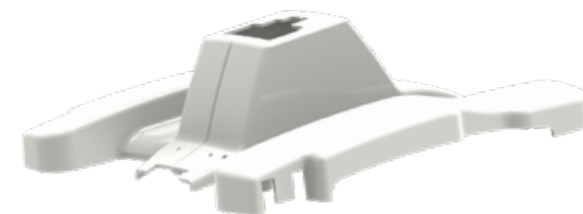
Chassis

The drive mechanism's base is made of cast aluminum. This means maximum stability and longevity and no-limits mobility. And the material and workmanship meet the strictest sanitary requirements.



Plastic cover panels

The mirror-finish plastic cover panels with their scratch-resistant and impact-modified surface finish are extremely hygienic and easy to disinfect.



Mains-free operation

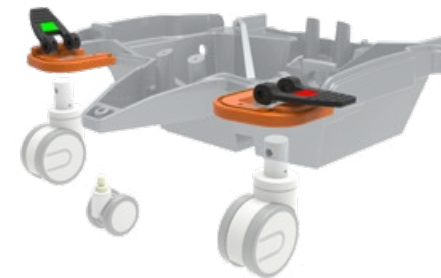
Accumulators

The charger-battery-control unit integrated in the drive mechanism permits mains-free operation at protective low voltage. Splash-protected charging socket on the bottom of the drive mechanism.



Braking system

The easy-to-reach and easy-to-use central brake acts on all four double castors to keep the *surgiForce light* safely and reliably in the desired position.



Multi-function unit

Foot operated

Timeless foot keypad design for UP/DOWN seat height adjustment with non-slip polyamide touch surfaces. Easy-to-reach brake levers on either side of the driving mechanism for centralized braking/unfettered maneuvering.



Abrasion-resistant corner guards (orange) made of synthetic rubber take the stress out of maneuvering *surgiForce light* even at close quarters to other medical equipment.

Armrests with gas-spring mechanism



3D freedom of movement

Armrest height is adjustable independently of seat height. It takes only simple rolling movement to manually control the gas spring mechanism.

Turning, tilting, rotating: The armrests have been designed for fast and unfussy 3D movements.



Need to readjust *surgiForce light* while maintaining sterile conditions? Not a problem! In addition to the foot keypad, *surgiForce light* features so-called "one-hand triggers" underneath the armrests.



High-precision, maintenance-free ball joint for full 360-degree range armrest movements around all axes. Ultra-lightweight guide system for fast, efficient and vibration-proof adjustment of individual underarm positions.

Seating systems



Seat angle adjustment

Back angle adjustment

Back height adjustment



Seat angle adjustment

Back angle adjustment

Back height adjustment



Comfort

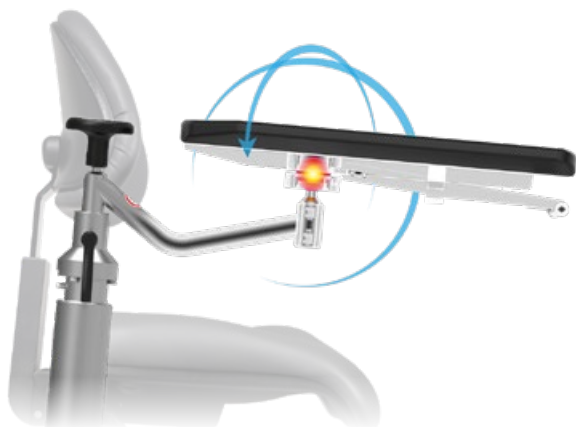
The Comfort seating system: with mechanical individual adjustment functions. An additional lumbar support as a backrest provides relief for the spine. Sliding carriage for adjusting the seat depth optionally available.



Formed seat

The form seating system: With enlarged contact surface for more comfort and optimum weight distribution. The seat surface can be individually tilted forward and fixed together with the backrest. In addition, angle and height adjustment of the backrest ensure an ideal sitting posture.

Angled armrest support for increased freedom of armrest movement around the lateral axis.



Technical specifications

Lifting column

- Lifting height of the seat 200 mm
- Lifting height of the armrests 130 mm
- Electromotive adjustment via the foot control elements

Dimensions maximum (LxWxH) incl. armrests

- with Comfort seat 825x700x1,190 mm
- with Formed seat 825x700x1,280 mm

Chassis

- Castors ø 100 mm
- 5th castors ø 65 mm
- Central brake acting on all four castors
- Emergency stop button

Battery unit

- Lead-gel battery, 2 pcs. 12 V, 2.9 A
- Universal battery charger: Input: 100 – 240 V
Output: 24 V

Seating systems:

- Min. sitting height 595 mm | 580 mm
- Max. sitting height 795 mm | 780 mm
- Seat angle adjustments -9°/+3° | -14°
- Back angle adjustments -21°/+2° | -19°/+5°

Weight

71 kg

Max. load

150 kg

Techn. Änderungen vorbehalten.

Upholstery/color card

Standard color
black
Item No.: 3037 0223



"Periline" Page 105

Comfort

Standard color
anthracite
Item No.: 3037 0052



"Tundra skai" Page 102

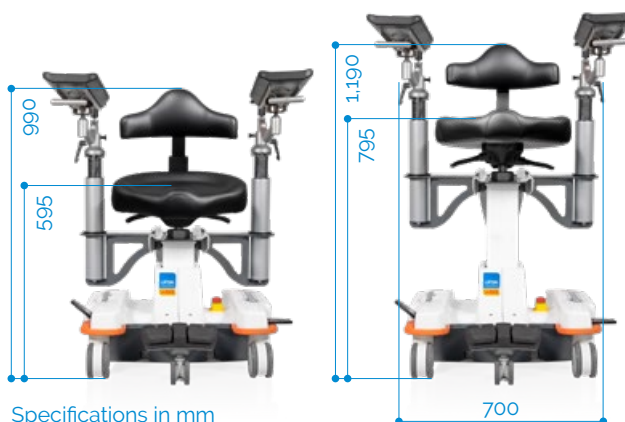
"Pandoria Plus" Page 103

Formed seat

Seating system Comfort

Minimum

Maximum



Specifications in mm

Seating system Formed seat

Minimum

Maximum



PREMIUM
LINE

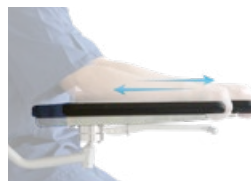
Components



surgiForce
Formed seat Item No.: 2600 0008



surgiForce
Comfort seat Item No.: 2600 0004



Armrest pair with
linear guide and
one-hand release,
factory-fitted

Item No.: 3351 1008



Armrest pair with
one-hand release for
neurosurgery (angular),
retrofit kit

Item No.: 3351 1010



Footswitch plate
429x820 mm, height 53 mm

Item No.: 3317 0000



Footswitch plate
429x670 mm, height 53 mm

Item No.: 3351 1041

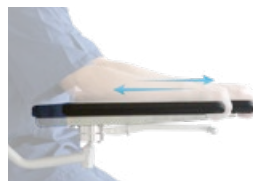
Components



surgiForce light
Formed seat **Item No.:** 2600 0009



surgiForce light
Comfort seat **Item No.:** 2600 0006



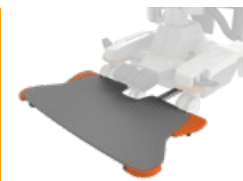
Armrest pair with linear guide and one-hand release, factory-fitted

Item No.: 3351 1008



Seat adjustment mechanism for optimum access to the operating field, adjustment 113 mm, factory-fitted

Item No.: 3351 1013



Footswitch plate
429x820 mm, height 53 mm

Item No.: 3317 0000



Footswitch plate
429x670 mm, height 53 mm

Item No.: 3351 1041

PREMIUM
LINE

Our classics

They represent proven and time-tested technology in a modern design, they are deliberately low-tech, and they offer an extremely attractive price-performance ratio.

Space-saving design and outstanding maneuverability coupled with a lean range of easy-to-manage functions.

Do you want flexible use in confined spaces with power-supply independent battery operation?

Then you should go for our classic:
The **surgiTrend** and **surgiLine** models – perfect in combination with our **performanceLine**, 500 **XLE** and 500 **XLE** *comfort* treatment chairs.

performanceLine systems
are designed for user satisfaction

Designed for continuous use in serially equipped operating theaters with high patient turnover, the **performanceLine** satisfies every user thanks to its easy handling before, during and after the surgery.



An award-winning "Preventive Technology", the **performanceLine** works hard to protect your surgical staff from back problems, thanks to its lightweight construction and easy maneuverability.

**Functionality
in a nutshell**

surgiTrend

Comfort seat (Illustration) Item No.: 2200 0012
Dynamic seat Item No.: 2200 0010



surgiLine

Formed seat (Illustration) Item No.: 2200 0008
Comfort seat Item No.: 2200 0013



Ophthalmic surgery



Microsurgery



ENT surgery

surgiTrend













Item No.: 2200 0012 with Comfort seat (Illustration)
Item No.: 2200 0010 with Dynamic seat

For back protection and maximum work flexibility in confined spaces. Sophisticated, space-saving drive mechanism with reduced size for ample foot space combines tilt stability with easy and smooth maneuvering. Outstanding sitting comfort and a wide range of adjusting functions allow every surgeon to find his or her personal best and healthiest working position for any work scenario. Available in two seating system types: Comfort or Dynamic.



Seating systems



 <p>Comfort</p>	<p>Seat angle adjustment</p> 	<p>Back angle adjustment</p> 	<p>Back height adjustment</p> 	<p>Upholstery/color card</p> <p>Standard color black Item No.: 3037 0223</p>  <p>"Periline" Page 105</p>
 <p>Dynamic</p>	<p>Dynamic-function</p> 	<p>Lumbar support angle adjustment</p> 	<p>Lumbar support height adjustment</p> 	<p>Standard color black Item No.: 3037 0021</p>  <p>"Stamskin Top" Page 104</p>

Armrests

- Stable, ergonomically shaped armrests with curved support surface (350 x 120 mm)
- Height-adjustable and equipped with a ball joint for 360-degree rotation
- Designed for personalized adjustment to the surgeon
- Optionally available with linear guide and one-hand release



Chassis

- 4 high-quality, smooth-running double castors
- 5th castors for added resistance to tipping
- Optimized foot space
- Central braking system effective on 4 castors
- Integrated foot keypad panel for seat-height adjustment
- Power supply-independent battery box with emergency stop button



Technical specifications

Lifting column

- Drive 3,000 N (IPX4)
- Lifting height 200 mm

Chassis

- L x W (incl. braking system/foot keypad) 650 x 600 mm
- Castors ø 100 mm
- 5th castors ø 65 mm
- Central brake acting on all four castors
- Emergency stop button

Battery unit

- Battery box with 2 batteries (lead-gel), pollution free, maintenance-free, cadmium-free 2 x 12 V, 7.2 Ah
- Universal battery charger: Input: 100 – 240 V
Output: 30 V

Seating systems:

Comfort | Dynamic

- Min. sitting height 550 mm | 600 mm
- Max. sitting height 750 mm | 800 mm
- Seat angle adjustments +5°/-5° | -12°
- Back angle adjustments +5°/-25° | -16°

Weight

45 kg

Max. load

150 kg

Subject to technical modifications.

Technical dimensions

Seating system Comfort

Minimum



Specifications in mm

Maximum



Seating system Dynamic

Minimum



Maximum



surgiLine

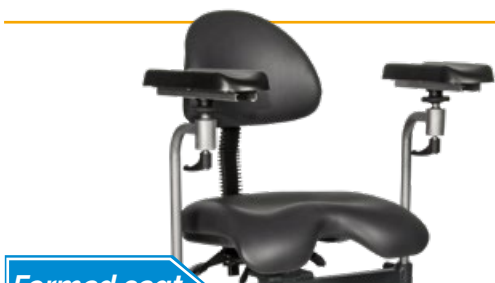


Item No.: 2200 0008 with Formed seat (Illustration)
Item No.: 2200 0013 with Comfort seat

The quintessential timeless surgeon chair for microsurgery. The *surgiLine* is a tried and tested classic and a reliable partner in the operating room. It has a rugged steel frame yet is easy to maneuver thanks to its high-grade double castors. The seat and backrest are height-adjustable and promote a healthy sitting posture thanks to *surgiLine's* special lumbar support. The armrests can be individually adjusted for each surgeon. Available in two seating system types: Formed seat or Comfort.



Seating systems



Formed seat

Seat angle adjustment



Back angle adjustment



Back height adjustment



Upholstery/color card

Standard color
anthracite
Item No.: 3037 0052



Formed seat

"Tundra skai" Page 102

"Pandoria Plus" Page 103



Comfort

Seat angle adjustment



Back angle adjustment



Back height adjustment



Standard color
black
Item No.: 3037 0235



Comfort

"Periline" Page 105

Armrests

- Stable, ergonomically shaped armrests with curved support surface (350 x 120 mm)
- Height-adjustable and equipped with a ball joint for 360-degree rotation
- Designed for personalized adjustment to the surgeon
- Optionally available with linear guide and one-hand release



Chassis

- Powder-coated tubular steel frame with sanitary, scratch-resistant high-sheen plastic cover panels
- Central braking system effective on 4 castors
- Integrated foot keypad panel for seat height adjustment
- Power supply-independent battery box with emergency stop button



Technical specifications

Lifting column

- Drive 3,000 N (IPX4)
- Lifting height 200 mm

Chassis

- L x W (incl. braking system/foot keypad) 640 x 600 mm
- Castors ø 100 mm
- Central brake acting on all four castors
- Emergency stop button

Battery unit

- Battery box with 2 batteries (lead-gel), pollution free, maintenance-free, cadmium-free 2 x 12 V, 7.2 Ah
- Universal battery charger: Input: 100 – 240 V
Output: 30 V

Seating system:

Formed seat | Comfort

- Min. sitting height 530 mm | 550 mm
- Max. sitting height 730 mm | 750 mm
- Seat angle adjustments +6°/-5° | +5°/-5°
- Back angle adjustments +5°/-18° | +5°/-25°

Weight

45 kg

Max. load

150 kg

Subject to technical modifications.

Technical dimensions

Seating system Formed seat

Minimum



Specifications in mm

Maximum



Seating system Comfort

Minimum



Maximum



Components



surgiTrend
Dynamic seat Item No.: 2200 0010



surgiTrend
Comfort seat Item No.: 2200 0012



surgiLine
Formed seat Item No.: 2200 0008



surgiLine
Comfort seat Item No.: 2200 0013



Backup battery

Item No.: 3047 0000



surgiTrend
Footswitch plate
480 x 715 mm, height 53 mm

Item No.: 3351 1011



surgiLine
Footswitch plate
480 x 715 mm, height 53 mm

Item No.: 3351 0014



Armrest pair with
linear guide and
one-hand release,
factory-fitted

Item No.: 3351 006



Armrest pair with
one-hand release,
factory-fitted

Item No.: 3351 1004





Assistant's chairs

Our operating room assistant for eye and microsurgery. Available with various seat and adjustment systems – to meet your personal needs. For a healthy back and sitting comfort.

An asset to the team in a wide range of configurations

efficiencyClass

assistPro F

Item No.: 2400 0005



assistPro H

Item No.: 2400 0009



performanceLine

assistTrend

Item No.: 2500 0002



efficiencyClass

easyPro F

Item No.: 2400 0010



easyPro H

Item No.: 2400 0006



easyPro R

Item No.: 2400 0013



functionalClass

easyLine F

Item No.: 2400 0020



easyLine R

Item No.: 2400 0022



easyLine Rs

Item No.: 2400 0024



functionalClass

assistLine

Item No.: 2400 0015





assistTrend

Item No.: 2500 0002

The ergonomic assistant chair.
The innovation for a healthy back.

Chassis

- High-grade 5-arm aluminium pedestal
- Excellent handling characteristics thanks to smooth-running double castors
- Optionally available with braking double castors
- Supports loads up to 130 kilograms

Seating system

Dynamic seat

- Innovative seating system Dynamic for a healthy lower back
- Height and angle adjustable lumbar support
- Supports a correct, back-friendly sitting posture
- Durable, easy-care seat cover made of medical-grade artificial leather to meet the highest OR requirements



The seating system Dynamic has a lumbar support which is activated automatically by the surgeon's bodyweight. The intensity of ergonomic support can be adjusted underneath the seat.



Technical specifications

Lifting column

- Height adjustment 580 – 780 mm
- For body height of 1.75 – 1.95 m

Chassis

- Five legged chassis ø 585 mm
- Castors ø 65 mm

Dynamic seat

- D x W x H (incl. back part) 390 x 440 x 410 mm
- Seat/back angle adjustment +12°

Weight

7.5 kg

Max. load

130 kg

Subject to technical modifications.

Flexibility

- Sterile, comfortable height adjustment via foottriggered gas pressure spring
- Flexible height adjustment from 58 to 78 cm
- Reduces neck and back tension caused by prolonged sitting
- Optionally available with arm supports
- Helps maintain sterile conditions

Standard color

black

Item No.: 3037 0021



Dynamic

"Stamskin Top" Page 104

assistPro

assistPro F Item No.: 2400 0005
assistPro H Item No.: 2400 0009

The perfect assistant's chair for your OR.

Chassis

- High-grade 5-arm aluminum pedestal
- Excellent handling characteristics thanks to smooth-running double castors
- Optionally available with braking double castors
- Supports loads up to 130 kilograms



Seating system

Comfort Seat

- Ergonomically shaped seat and backrest
- Supports a correct, back-friendly sitting posture
- Durable, easy-care seat cover made of medical-grade artificial leather to meet the highest OR requirements
- Optionally available with electrically conductive upholstery



assistPro F foot trigger
sterile height adjustment



assistPro H manual trigger
classic height adjustment



Technical specifications

Lifting column

- Height adjustment assistPro F 530–730 mm
assistPro H 520–720 mm

Chassis

- Five legged chassis ø 585 mm
- Castors ø 65 mm

Comfort seat

- D x W x H (incl. back part) 385 x 425 x 540 mm
- Seat angle adjustment +5°/-5°
- Back angle adjustment +5°/-25°

Weight

- assistPro F 12 kg
- assistPro H 11 kg

Max. load

130 kg

Subject to technical modifications.

Flexibility

Variants

- Sterile, comfortable height adjustment via foottriggered gas pressure spring (assistPro F)
- Classic seat height adjustment via manual trigger underneath the seat (assistPro H)
- Flexible height adjustment from 53 to 73 cm (assistPro F) and 52 to 72 cm (assistPro H)
- Reduces neck and back tension caused by prolonged sitting
- Optionally available with arm supports (assistPro F)

Standard color

black

Item No.: 3037 0235



Comfort

"Periline" Page 105



easyPro

easyPro F Item No.: 2400 0010
 easyPro H Item No.: 2400 0006
 easyPro R Item No.: 2400 0013

The comfortable assistant chair for your OR.



Seating system



- Ergonomically shaped, ultra comfortable, large-surface seat element
- Comfort upholstery
- Durable, easy-care seat cover made of medical-grade artificial leather to meet the highest OR requirements



Chassis

- High-grade 5-arm aluminum pedestal
- Excellent handling characteristics thanks to smooth-running double castors
- Optionally available with braking double castors
- Supports loads up to 130 kilograms

Technical specifications

Lifting column

• Height adjustment	easyPro F	510 – 710 mm
	easyPro H	500 – 700 mm
	easyPro R	520 – 700 mm

Chassis

• Five legged chassis	ø 585 mm
• Castors	ø 65 mm

Comfort Seat

• D x W x H	385 x 425 x 100 mm
• Seat angle adjustment	+5°/-5°
	easyPro F + easyPro H

Weight	9 kg
--------	------

Max. load	130 kg
-----------	--------

Subject to technical modifications.

Flexibility

Variants

- Sterile, comfortable height adjustment via foottriggered gas pressure spring (easyPro F)
- Classic seat height adjustment via hand trigger (easyPro H) or hand-operated ring (easyPro R) underneath the seat
- Flexible height adjustment from 51 to 71 cm (easyPro F), 50 to 70 cm (easyPro H) and 52 to 70 cm (easyPro R)

Standard color

black
 Item No.: 3037 0235



Comfort

„Periline“ Page 105

easyLine

easyLine F Item No.: 2400 0020
 easyLine R Item No.: 2400 0022
 easyLine Rs Item No.: 2400 0024

The all-rounder for your OR.



Chassis

- High-grade 5-arm aluminum pedestal
- Excellent handling characteristics thanks to smooth-running double castors
- Optionally available with braking double castors
- Low seat position thanks to short gas spring (easyLine Rs)
- Supports loads up to 130 kilograms

**Lowest seat height
in its class**

Seating system



easyLine F



easyLine R



easyLine Rs

- Ultra comfortable, large-surface seat part, thick seat cushion with high adaptability
- Comfort upholstery
- Durable, easy-care seat cover made of medical-grade artificial leather to meet the highest OR requirements

Technical specifications

Lifting column

• Height adjustment	easyLine F	580 – 760 mm
	easyLine R	575 – 760 mm
	easyLine Rs	465 – 580 mm

Chassis

• Five legged chassis	ø 585 mm
• Castors	ø 65 mm

Round seat

• D x W x H	400 x 400 x 105 mm
-------------	--------------------

Weight

easyLine F	9.8 kg
easyLine R	7.6 kg
easyLine Rs	7.6 kg

Max. load

130 kg

Subject to technical modifications.

Flexibility

Variants

- Sterile, comfortable height adjustment via foottriggered gas pressure spring (easyLine F)
- Classic seat height adjustment via hand-operated ring (easyLine R, easyLine Rs) underneath the seat
- Flexible height adjustment from 58 to 76 cm (easyLine F), 57.5 to 76 cm (easyLine R) and 46.5 to 58 cm (easyLine Rs)

Standard color

black

Item No.: 3037 0235



Round seat

"Periline" Page 105



assistLine

Item No.: 2400 0015

The one with the cushy saddle seat.

Chassis

- High-grade 5-arm aluminum pedestal
- Excellent handling characteristics thanks to smooth-running double castors
- Optionally available with braking double castors
- Supports loads up to 130 kilograms



Seating system

Saddle seat

- Ergonomic saddle seat
- Allows the assistants to sit in comfort
- Prevents tension pain and fatigue
- Supports blood circulation
- Durable, easy-care seat cover made of medical-grade artificial leather to meet the highest OR requirements



Technical specifications

Lifting column

- Height adjustment 520 – 720 mm

Chassis

- Five legged chassis ø 585 mm
- Castors ø 65 mm

Saddle seat

- D x W x H 350 x 425 x 180 mm
- Seat angle adjustment +5°/-5°

Weight

7.5 kg

Max. load

130 kg

Subject to technical modifications.

Flexibility

- Classic seat height adjustment via hand trigger underneath the seat
- Flexible height adjustment from 52 to 72 cm
- Small size for flexible use in OR's and labs

Standard color

anthracite

Item No.: 3037 0052



Saddle seat

"Tundra skai" Page 102

"Pandoria Plus" Page 103

Components



assistTrend
Item No.: 2500 0002



assistPro F
Item No.: 2400 0005



assistPro H
Item No.: 2400 0009



Armrest pair
incl. traverse
assistTrend

Item No.: 3300 0000



Armrest pair
incl. traverse
assistPro F

Item No.: 3351 0038



easyPro F
Item No.: 2400 0010



easyPro H
Item No.: 2400 0006



easyPro R
Item No.: 2400 0013



Double rimmed castor,
65 mm, with braking function

Item No.: 3351 0040

Components



easyLine F
Item No.: 2400 0020



easyLine R
Item No.: 2400 0022



easyLine Rs
Item No.: 2400 0024



assistLine
Item No.: 2400 0015



Double rimmed castor,
65 mm, with braking function

Item No.: 3351 0040



Regulatory information on the equipment's registration as a medical device



UFSK Item No.	Medical device Category		Active medical device	Medical device CE conformity	Performance characteristics in accordance with basic standards	Electrical safety
<i>eyeForce</i> 1800 0000	<i>Treatment chair</i>	electrically adjustable/safety extra-low voltage	DC battery operated	in the EU: Class I Conformity assessment procedure in accordance with Annexes II and III, Regulation (EU) 2017/745, Art. 52 (7) (formerly: Annex VII, Directive 93/42/EEG)	DIN EN 60601-1, DIN EN 60601-1-2	DIN EN 60601-1 Protection class II, Type B DIN EN 60529 Degree of Protection IP24 DIN EN 62353 Technical Safety Inspection once per year
<i>500 XLE</i> 1500 0006						
<i>500 XLE comfort</i> 1500 0006 + 3037 0080						
<i>500 XLS</i> 1500 0005						
<i>500 ECO</i> 1500 0008			main connection, via integrated power supply (100 – 240 V) incl. isolating transformer			
<i>motionLine-E</i> 1700 0001	<i>Transport- and relaxing chair</i>	electrically adjustable/safety extra-low voltage	DC battery operated	in the US/FDA: Class I Conformity assessment in accordance with 21 CFR Part 886, 510(k) Exempt	DIN EN 60601-1, DIN EN 60601-1-2	DIN EN 62353 Technical Safety Inspection once per year
<i>surgiForce</i> 2600 0004 2600 0008	<i>Surgeon's chair</i>					
<i>surgiForce light</i> 2600 0006 2600 0009						
<i>surgiTrend</i> 2200 0010 2200 0012						
<i>surgiLine</i> 2200 0008 2200 0013						

UFSK Item No.	Medical device Category	Active medical device	Medical device CE conformity	Quality/performance characteristics and equipment safety
<i>motion</i> Line 1700 0000	Transport- and relaxing chair	pneumatically adjustable	<div>in the EU: Class I Conformity assessment procedure in accordance with Annexes II and III, Regulation (EU) 2017/745, Art. 52 (7) (formerly: Annex VII, Directive 93/42/EWG)</div> <div>in the US/FDA: Class I Conformity assessment in accordance with 21 CFR Part 886, 510(k) Exempt</div>	<div>in accordance with Regulation (EU) 2017/745, Art. 52 (7)</div> <div>Technical Safety Inspection once per year</div>
<i>400 XL</i> 1400 0001	Treatment table	hydraulically adjustable		
<i>assist</i> Trend 2500 0002	Assistant´s chair	pneumatically adjustable		
<i>assist</i> Pro F 2400 0005				
<i>assist</i> Pro H 2400 0009				
<i>easy</i> Pro F 2400 0010				
<i>easy</i> Pro H 2400 0006				
<i>easy</i> Pro R 2400 0013				
<i>easy</i> Line F 2400 0020				
<i>easy</i> Line R 2400 0022				
<i>easy</i> Line Rs 2400 0024				
<i>assist</i> Line 2400 0015				
<i>support</i> Line 3351 0026	Instrument table		<div>in the EU: Class I Conformity assessment procedure in accordance with Annexes II and III, Regulation (EU) 2017/745, Art. 52 (7) (formerly: Annex VII, Directive 93/42/EWG)</div>	
<i>support</i> Line plus 3351 0045				

Color cards



Customize the upholstery of your products to color-coordinate them with your workplace environment.

To do this, select one or two colors (main and accent color - as with the 500 **XLE** comfort and 500 **ECO**) from one of the following color cards.



Application example *motionLine-E*

The colors displayed on your device may differ slightly from the original colors. If you wish to receive original color charts, please contact us at info@ufsk-osys.com.

Example: standard version

Main color:
anthrazit F6461197
Item No.: 3037 0052

Accent color:
chrom F6461205
Item No.: 3037 0056



500 *XLE* comfort

Item No.: 1500 0006
+ 3037 0080

Examples of color combinations

schoko F6461357
Item No.: 3037 0060

feuer F6461454
Item No.: 3037 0063



safran F6461542
Item No.: 3037 0069

schoko F6461357
Item No.: 3037 0060



atoll F6461453
Item No.: 3037 0062

weiß F6461198
Item No.: 3037 0134



"Tundra skai"



High quality skai® material with fine calf leather grain and subdued matte-gloss-effect. The very extensive and trend-orientated color spectrum enables many applications and combinations.

Product Specification

- Long-lasting
- Tear resistant
- Easy to clean
- Abrasion resistant (DIN EN ISO 6570-2)
- Lightfast
- Disinfectant resistant
- Biocompatibility: cytotoxicity (EN ISO 10 993-5) and epicutaneous test (EN ISO 10 993-10)
- Blood- and urine resistant
- Phthalate-free
- Vegan

eyeForce	1800 0000
500 XLE	1500 0006
500 XLE comfort	1500 0006
	+ 3037 0080
500 XLS	1500 0005
500 ECO	1500 0008
400 XL	1400 0001
surgiForce	Formed seat 2600 0008
surgiForce light	Formed seat 2600 0009
surgiLine	Formed seat 2200 0008
assistLine	2400 0015
motionLine	1700 0000
motionLine-E	1700 0001

+ Item No.: 3037 0...

weiß F6461198 Item No.:134	creme F6461210 Item No.:057	beige F6461636 Item No.:094	sand F6461230 Item No.:058	pistazio F6461610 Item No.:153	mint F6461495 Item No.:067	aqua F6461456 Item No.:001	türkis F6461338 Item No.:008
perle F6461288 Item No.:007	silber F6461550 Item No.:070	stone F6461608 Item No.:075	bleu F6461496 Item No.:068	dolphin F6461609 Item No.:076	sky F6461581 Item No.:073	royal F6461196 Item No.:051	atoll F6461453 Item No.:062
violett F6461356 Item No.:059	cyclame F6461381 Item No.:119	orchidee F6461354 Item No.:011	bordeaux F6461350 Item No.:010	kirsche F6461199 Item No.:054	feuer F6461454 Item No.:063	karneol F6461557 Item No.:072	orange F6461556 Item No.:071
apricot F6461458 Item No.:066	mais F6461457 Item No.:065	mango F6461607 Item No.:074	safran F6461542 Item No.:069	limonade F6461343 Item No.:009	limone F6461543 Item No.:109	smaragd F6461455 Item No.:064	agave F6461273 Item No.:006
chrom F6461205 Item No.:056	ocean F6461204 Item No.:055	schoko F6461357 Item No.:060	schwarz F6461195 Item No.:050	anthrazit F6461197 Item No.:052			

The colors displayed on your device may differ slightly from the original colors. If you wish to receive original color charts, please contact us at info@ufsk-osys.com.

"Pandoria Plus"



skai® Pandoria Plus is a high-quality upholstery material, whose fine micropore structure gives a certain unobtrusiveness, which is refined by an attractive tone-in-tone effect. The very pleasant feel of the material and the excellent material characteristic and the broad, modern color spectrum make skai® Pandoria Plus universally usable.

Product Specification

- Long-lasting
- Tear resistant
- Easy to clean
- Abrasion resistant (DIN EN ISO 5470-2)
- Resistant to oil and fat
- Lightfast
- Disinfectant resistant
- Flame protection
- Biocompatibility: cytotoxicity (EN ISO 10 993-5) and epicutaneous test (EN ISO 10 993-10)
- Resistant to sweat, blood and urine
- Antibacterial according to JIS Z 2801
- Vegan

<i>eyeForce</i>		1800 0000
<i>500 XLE</i>		1500 0006
<i>500 XLE comfort</i>		1500 0006
		+ 3037 0080
<i>500 XLS</i>		1500 0005
<i>500 ECO</i>		1500 0008
<i>400 XL</i>		1400 0001
<i>surgiForce</i>	Formed seat	2600 0008
<i>surgiForce light</i>	Formed seat	2600 0009
<i>surgiLine</i>	Formed seat	2200 0008
<i>assistLine</i>		2400 0015
<i>motionLine</i>		1700 0000
<i>motionLine-E</i>		1700 0001

+ Item No.: 3037 0136

+ Item No.: 3037 0...

weiß F6413046 Item No.:053	hellbeige F6413047 Item No.:141	kiesel F6413048 Item No.:158	birke F6413049 Item No.:159	smoke F6413050 Item No.:221
silbergrau F6413075 Item No.:275	platin F6413053 Item No.:161	anthrazit F6413076 Item No.:276	schwarz F6413052 Item No.:170	schoko F6413051 Item No.:160
gletscher F6413055 Item No.:162	sky F6413074 Item No.:277	royal F6413056 Item No.:163	smaragd F6413073 Item No.:278	kaktus F6413077 Item No.:281
feuer F6413058 Item No.:166	kirsche F6413079 Item No.:279	fuchsia F6413078 Item No.:280	mais F6413057 Item No.:164	limone F6413054 Item No.:165

The colors displayed on your device may differ slightly from the original colors. If you wish to receive original color charts, please contact us at info@ufsk-osys.com.

"Periline"



Product Specification

- Without Phthalates
- Biocompatibility:
cytotoxicity (EN ISO 10 993-5) and
epicutaneous test (EN ISO 10 993-10)
- Urine resistance
- Blood resistance
- Resistance to perspiration
- Resistance to spitting
- Light fastness
- Color fastness to rubbing
- Flame retardant

<i>surgiForce</i>	Comfort seat	2600 0004
<i>surgiForce light</i>	Comfort seat	2600 0006
<i>surgiTrend</i>	Comfort seat	2200 0012
<i>surgiLine</i>	Comfort seat	2200 0013
<i>assistPro F</i>		2400 0005
<i>assistPro H</i>		2400 0009
<i>easyPro F</i>		2400 0010
<i>easyPro H</i>		2400 0006
<i>easyPro R</i>		2400 0013
<i>easyLine F</i>		2400 0020
<i>easyLine R</i>		2400 0022
<i>easyLine Rs</i>		2400 0024

+ Item No.: 3037 0...

				
kastanie 015817 Item No.:240	light brown 016037 Item No.:239	creme 015812 Item No.:225	weiß 010881 Item No.:224	stein 015813 Item No.:236
				
saphir 015814 Item No.:231	delft 010766 Item No.:241	antistatisch schwarz Item No.:223	schwarz 011499 Item No.:235	anthracit 016046 Item No.:234
				
azur 015815 Item No.:230	aubergine 016041 Item No.:229	lavendel 016042 Item No.:228	rot 010878 Item No.:238	orange 016040 Item No.:237
				
kiwi 015816 Item No.:233	lime green 016043 Item No.:232	lemon 016039 Item No.:226	safran 010879 Item No.:227	

The colors displayed on your device may differ slightly from the original colors. If you wish to receive original color charts, please contact us at info@ufsk-osys.com.

UFSK-International OSYS GmbH



DR. KANAL (WIESBADEN, DE)

To learn more about us and see the latest references of national and international eye clinics, please go to

www.ufsk-osys.com

Legal Notice

UFSK-International OSYS GmbH,
D-93055 Regensburg

All rights, especially the right of reproduction and distribution as well as translation, are reserved. No part of this publication may be reproduced in any form whatsoever without the written permission of the publisher, or processed, duplicated or distributed by means of electronic systems. We accept no liability for minor technical changes, color variations, or typesetting and translation errors. Due to our quality policy with continuous improvements, the products may differ from the images shown. Any errors and legal disputes based on this document may be claimed only in reference to its German original or an authorized foreign-language version.

Conceptual Design and Completion/
Layout and Design:
UFSK-International OSYS GmbH,
Kirchhoffstrasse 1, D-93055 Regensburg

English translation of the original German version, produced and printed in Germany.



The future is mobile.

Upgrade your OR to perfection.



eyeForce



500 XLE



500 XLE comfort



500 XLS



500 ECO



400 XL



motionLine



motionLine-E



surgiForce



surgiForce light



surgiTrend



surgiLine



stayClean wipes



stayClean



staySoft



stayClean roll



supportLine



supportLine plus



assistTrend



assistPro F



assistPro H



easyPro F



easyPro H



easyPro R



easyLine F



easyLine R



easyLine Rs



assistLine

CONTACT US



UFSK
INTERNATIONAL

OSYS

UFSK-International OSYS GmbH
Kirchhoffstraße 1
93055 Regensburg
Germany

Phone +49 (0) 941 78862 15
Fax +49 (0) 941 78862 35
Mail info@ufsk-osys.com
Web ufsk-osys.com

MADE IN GERMANY
Design | Construction | Manufacturing